

TIMP1 Antibody

Rabbit mAb

Catalog # AP91047

Product Information

Application	WB, IHC
Primary Accession	P01033
Reactivity	Human
Clonality	Monoclonal
Other Names	CLGI; Collagenase inhibitor; EPA; EPO; HCI; Metalloproteinase inhibitor 1; TIMP; TIMP1;
Isotype	Rabbit IgG
Host	Rabbit
Calculated MW	23171

Additional Information

Dilution	WB 1:500~1:1000 IHC 1:50~1:200
Purification	Affinity-chromatography
Immunogen	A synthesized peptide derived from human TIMP1
Description	TIMP1 Complexes with metalloproteinases (such as collagenases) and irreversibly inactivates them by binding to their catalytic zinc cofactor. Also mediates erythropoiesis in vitro; but, unlike IL-3, it is species-specific, stimulating the growth and differentiation of only human and murine erythroid progenitors. Known to act on MMP-1, MMP-2, MMP-3, MMP-7, MMP-8, MMP-9, MMP-10, MMP-11, MMP-12, MMP-13 and MMP-16.
Storage Condition and Buffer	Rabbit IgG in phosphate buffered saline , pH 7.4, 150mM NaCl, 0.02% sodium azide and 50% glycerol. Store at +4°C short term. Store at -20°C long term. Avoid freeze / thaw cycle.

Protein Information

Name	TIMP1
Synonyms	CLGI, TIMP
Function	Metalloproteinase inhibitor that functions by forming one to one complexes with target metalloproteinases, such as collagenases, and irreversibly inactivates them by binding to their catalytic zinc cofactor. Acts on MMP1, MMP2, MMP3, MMP7, MMP8, MMP9, MMP10, MMP11, MMP12, MMP13 and MMP16. Does not act on MMP14. Also functions as a growth factor that regulates cell differentiation, migration and cell death and activates cellular signaling cascades via CD63 and ITGB1. Plays a role in integrin signaling. Mediates erythropoiesis in vitro; but, unlike IL3, it is species-specific, stimulating the growth and differentiation of only human and murine erythroid progenitors.

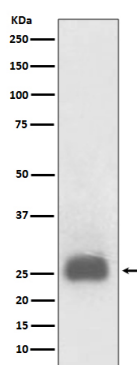
Cellular Location

Secreted

Tissue Location

Detected in rheumatoid synovial fluid (at protein level).

Images



Western blot analysis of TIMP1 expression in HL60 cell lysate treated with TPA.

Please note: All products are 'FOR RESEARCH USE ONLY. NOT FOR USE IN DIAGNOSTIC OR THERAPEUTIC PROCEDURES'.