

NEDD8 Antibody

Rabbit mAb

Catalog # AP91053

Product Information

Application	WB, IHC, IF, ICC, IP, IHF
Primary Accession	Q15843
Reactivity	Rat, Human, Mouse
Clonality	Monoclonal
Other Names	NEDD8; Nedd-8;
Isotype	Rabbit IgG
Host	Rabbit
Calculated MW	9072

Additional Information

Dilution	WB 1:500~1:2000 IHC 1:50~1:200 ICC/IF 1:50~1:200 IP 1:20
Purification	Affinity-chromatography
Immunogen	A synthesized peptide derived from human NEDD8
Description	Neural precursor cell-expressed developmentally downregulated protein 8 (NEDD8), also known as Rub1 (related to ubiquitin 1) in plants and yeast, is a member of the ubiquitin-like protein family. The covalent attachment of NEDD8 to target proteins, termed neddylation, is a reversible, multi-step process analogous to ubiquitination.
Storage Condition and Buffer	Rabbit IgG in phosphate buffered saline , pH 7.4, 150mM NaCl, 0.02% sodium azide and 50% glycerol. Store at +4°C short term. Store at -20°C long term. Avoid freeze / thaw cycle.

Protein Information

Name	NEDD8 {ECO:0000303 PubMed:9694792, ECO:0000312 HGNC:HGNC:7732}
Function	Ubiquitin-like protein which plays an important role in cell cycle control and embryogenesis via its conjugation to a limited number of cellular proteins, such as cullins or p53/TP53 (PubMed: 10318914 , PubMed: 10597293 , PubMed: 11953428 , PubMed: 14690597 , PubMed: 15242646 , PubMed: 9694792 , PubMed: 38605244 , PubMed: 38316879). Attachment of NEDD8 to cullins is critical for the recruitment of E2 to the cullin-RING- based E3 ubiquitin-protein ligase complex, thus facilitating polyubiquitination and proteasomal degradation of cyclins and other regulatory proteins (PubMed: 10318914 , PubMed: 10597293 , PubMed: 11953428 , PubMed: 20688984 , PubMed: 9694792 , PubMed: 38605244 , PubMed: 38316879). Attachment of NEDD8 to p53/TP53 inhibits p53/TP53 transcriptional activity (PubMed: 15242646). Covalent attachment to its substrates requires prior activation by the E1 complex UBE1C-APPBP1 and linkage to the E2 enzyme UBE2M (PubMed: 14690597).

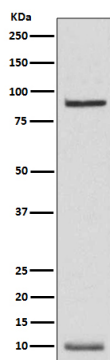
Cellular Location

Nucleus. Note=Mainly nuclear.

Tissue Location

Highly expressed in heart, skeletal muscle, spleen, thymus, prostate, testis, ovary, colon and leukocytes

Images



Western blot analysis of NEDD8 expression in K562 cell lysate.

Please note: All products are 'FOR RESEARCH USE ONLY. NOT FOR USE IN DIAGNOSTIC OR THERAPEUTIC PROCEDURES'.