

Catenin gamma Antibody

Rabbit mAb

Catalog # AP91062

Product Information

Application	WB, IHC, IF, FC, ICC, IHF
Primary Accession	P14923
Reactivity	Rat, Human, Mouse, Dog
Clonality	Monoclonal
Other Names	ARVD12; Catenin gamma; CTNNG; Desmoplakin III; Desmoplakin-3; DP3; DPIII; gamma-catenin; Junction plakoglobin; JUP; PDGB; PKGB; PLAK;
Isotype	Rabbit IgG
Host	Rabbit
Calculated MW	81745

Additional Information

Dilution	WB 1:500~1:2000 IHC 1:50~1:200 ICC/IF 1:50~1:200 FC 1:50
Purification	Affinity-chromatography
Immunogen	A synthesized peptide derived from human Catenin gamma
Description	Desmoplakin 3 Common junctional plaque protein. The membrane-associated plaques are architectural elements in an important strategic position to influence the arrangement and function of both the cytoskeleton and the cells within the tissue. The presence of plakoglobin in both the desmosomes and in the intermediate junctions suggests that it plays a central role in the structure and function of submembranous plaques.
Storage Condition and Buffer	Rabbit IgG in phosphate buffered saline , pH 7.4, 150mM NaCl, 0.02% sodium azide and 50% glycerol. Store at +4°C short term. Store at -20°C long term. Avoid freeze / thaw cycle.

Protein Information

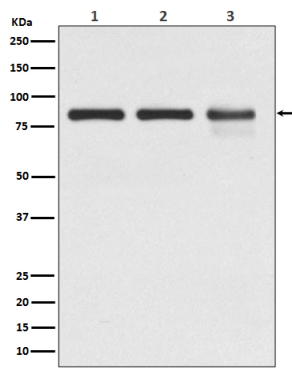
Name	JUP (HGNC:6207)
Function	Common junctional plaque protein. The membrane-associated plaques are architectural elements in an important strategic position to influence the arrangement and function of both the cytoskeleton and the cells within the tissue. The presence of plakoglobin in both the desmosomes and in the intermediate junctions suggests that it plays a central role in the structure and function of submembranous plaques. Acts as a substrate for VE-PTP and is required by it to stimulate VE- cadherin function in endothelial cells. Can replace beta-catenin in E- cadherin/catenin adhesion complexes which are proposed to couple cadherins to the actin cytoskeleton (By similarity).
Cellular Location	Cell junction, adherens junction. Cell junction, desmosome. Cytoplasm, cytoskeleton. Cell membrane; Peripheral membrane protein. Cytoplasm

{ECO:0000250|UniProtKB:Q9PVF7}. Cell junction
{ECO:0000250|UniProtKB:Q9PVF7}. Nucleus
{ECO:0000250|UniProtKB:Q9PVF7} Note=Cytoplasmic in a soluble and membrane-associated form. Colocalizes with DSG4 at desmosomes (PubMed:21495994)

Tissue Location

Expressed in the heart (at protein level).

Images



Western blot analysis of Catenin gamma expression in (1) A431 cell lysate; (2) NIH 3T3 cell lysate; (3) C6 cell lysate.

Please note: All products are 'FOR RESEARCH USE ONLY. NOT FOR USE IN DIAGNOSTIC OR THERAPEUTIC PROCEDURES'.