

S100 alpha 6 Antibody

Rabbit mAb

Catalog # AP91065

Product Information

Application	WB, IHC, IF, FC, ICC, IP, IHF
Primary Accession	P06703
Reactivity	Rat, Human, Mouse
Clonality	Monoclonal
Other Names	Protein S100-A6; Calcyclin; MLN 4; PRA; CACY; CABP; 5B10;
Isotype	Rabbit IgG
Host	Rabbit
Calculated MW	10180

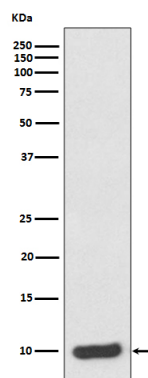
Additional Information

Dilution	WB 1:500~1:2000 IHC 1:50~1:200 ICC/IF 1:50~1:200 IP 1:50 FC 1:50
Purification	Affinity-chromatography
Immunogen	A synthesized peptide derived from human S100 alpha 6
Description	S100A6 (calcyclin) is involved in a number of cellular processes, including exocytosis and cell cycle regulation. In addition, S100A6 interacts with a number of proteins such as SIP, GAPDH, and annexins in a calcium-dependent fashion. Research studies demonstrate that a down regulation of corresponding S100A6 gene expression causes a decrease in cell proliferation.
Storage Condition and Buffer	Rabbit IgG in phosphate buffered saline , pH 7.4, 150mM NaCl, 0.02% sodium azide and 50% glycerol. Store at +4°C short term. Store at -20°C long term. Avoid freeze / thaw cycle.

Protein Information

Name	S100A6
Synonyms	CACY
Function	May function as calcium sensor and modulator, contributing to cellular calcium signaling. May function by interacting with other proteins, such as TPR-containing proteins, and indirectly play a role in many physiological processes such as the reorganization of the actin cytoskeleton and in cell motility. Binds 2 calcium ions. Calcium binding is cooperative.
Cellular Location	Nucleus envelope. Cytoplasm. Cell membrane; Peripheral membrane protein; Cytoplasmic side

Images



Western blot analysis of S100 alpha 6 expression in HeLa cell lysate.

Please note: All products are 'FOR RESEARCH USE ONLY. NOT FOR USE IN DIAGNOSTIC OR THERAPEUTIC PROCEDURES'.