

# ACTN2 Antibody

Rabbit mAb

Catalog # AP91070

## Product Information

---

<b>Application</b>	WB, IHC, IP
<b>Primary Accession</b>	<a href="#">P35609</a>
<b>Reactivity</b>	Rat, Human, Mouse
<b>Clonality</b>	Monoclonal
<b>Other Names</b>	Actin binding protein; Actinin alpha 2; ACTN 2; ACTN2; Alpha actinin 2;
<b>Isotype</b>	Rabbit IgG
<b>Host</b>	Rabbit
<b>Calculated MW</b>	103854

## Additional Information

---

<b>Dilution</b>	WB 1:500~1:2000 IHC 1:50~1:200 IP 1:50
<b>Purification</b>	Affinity-chromatography
<b>Immunogen</b>	A synthesized peptide derived from human ACTN2
<b>Description</b>	F-actin cross-linking protein which is thought to anchor actin to a variety of intracellular structures. This is a bundling protein.
<b>Storage Condition and Buffer</b>	Rabbit IgG in phosphate buffered saline , pH 7.4, 150mM NaCl, 0.02% sodium azide and 50% glycerol. Store at +4°C short term. Store at -20°C long term. Avoid freeze / thaw cycle.

## Protein Information

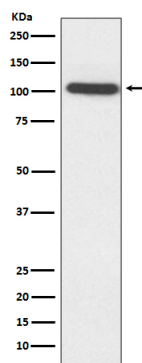
---

<b>Name</b>	ACTN2
<b>Function</b>	F-actin cross-linking protein which is thought to anchor actin to a variety of intracellular structures. This is a bundling protein.
<b>Cellular Location</b>	Cytoplasm, myofibril, sarcomere, Z line. Note=Colocalizes with MYOZ1 and FLNC at the Z-lines of skeletal muscle
<b>Tissue Location</b>	Expressed in both skeletal and cardiac muscle.

## Images

---

Western blot analysis of ACTN2 expression in HepG2 cell lysate.



Please note: All products are 'FOR RESEARCH USE ONLY. NOT FOR USE IN DIAGNOSTIC OR THERAPEUTIC PROCEDURES'.