

# S100P Antibody

Rabbit mAb

Catalog # AP91076

## Product Information

<b>Application</b>	WB, IHC, IF, ICC, IP, IHF
<b>Primary Accession</b>	<a href="#">P25815</a>
<b>Reactivity</b>	Human
<b>Clonality</b>	Monoclonal
<b>Other Names</b>	Protein S100-E; Protein S100P; S100 calcium binding protein P; S100E;
<b>Isotype</b>	Rabbit IgG
<b>Host</b>	Rabbit
<b>Calculated MW</b>	10400

## Additional Information

<b>Dilution</b>	WB 1:500~1:2000 IHC 1:50~1:200 ICC/IF 1:50~1:200 IP 1:50
<b>Purification</b>	Affinity-chromatography
<b>Immunogen</b>	A synthesized peptide derived from human S100P
<b>Description</b>	S100 proteins regulate a variety of cellular processes such as cell growth and motility, cell cycle progression, transcription, and differentiation. S100P, a member of the S100 family, is a 95 amino acid protein. Its expression is increased in a number of tumors including pancreas, lung, breast, and ovary carcinomas in response to transcriptional activation.
<b>Storage Condition and Buffer</b>	Rabbit IgG in phosphate buffered saline , pH 7.4, 150mM NaCl, 0.02% sodium azide and 50% glycerol. Store at +4°C short term. Store at -20°C long term. Avoid freeze / thaw cycle.

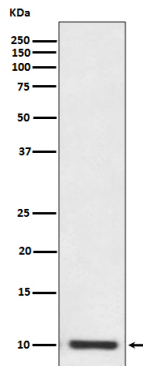
## Protein Information

<b>Name</b>	S100P
<b>Synonyms</b>	S100E
<b>Function</b>	May function as calcium sensor and contribute to cellular calcium signaling. In a calcium-dependent manner, functions by interacting with other proteins, such as EZR and PPP5C, and indirectly plays a role in physiological processes like the formation of microvilli in epithelial cells. May stimulate cell proliferation in an autocrine manner via activation of the receptor for activated glycation end products (RAGE).
<b>Cellular Location</b>	Nucleus. Cytoplasm. Cell projection, microvillus membrane. Note=Colocalizes with S100PBP in the nucleus. Colocalizes with EZR in the microvilli in a calcium-dependent manner
<b>Tissue Location</b>	Detected in all of the tissues except brain, testis and small intestine,

expression level is higher in placenta, heart, lung, skeletal muscle, spleen and leukocyte. Up-regulated in various pancreatic ductal adenocarcinomas and pancreatic intraepithelial neoplasias.

## Images

---



Western blot analysis of S100P expression in SW480 cell lysate.

Image not found : 202311/AP91076-IHC.jpg

Immunohistochemical analysis of paraffin-embedded human bladder carcinoma, using S100P Antibody.

Image not found : 202311/AP91076-IF.jpg

Immunofluorescent analysis of SW480 cells, using S100P Antibody.

Please note: All products are 'FOR RESEARCH USE ONLY. NOT FOR USE IN DIAGNOSTIC OR THERAPEUTIC PROCEDURES'.