

Neutrophil Elastase Antibody

Rabbit mAb

Catalog # AP91077

Product Information

Application	WB, IHC, IF, FC, ICC, IHF
Primary Accession	P08246
Reactivity	Human, Mouse
Clonality	Monoclonal
Other Names	ELA2; ELANE; Elastase 2; Medullasin; Neutrophil elastase; PMN E; SCN1;
Isotype	Rabbit IgG
Host	Rabbit
Calculated MW	28518

Additional Information

Dilution	WB 1:500~1:2000 IHC 1:100~1:500 ICC/IF 1:50~1:200 FC 1:30
Purification	Affinity-chromatography
Immunogen	A synthesized peptide derived from human Neutrophil Elastase
Description	Modifies the functions of natural killer cells, monocytes and granulocytes. Inhibits C5a-dependent neutrophil enzyme release and chemotaxis.
Storage Condition and Buffer	Rabbit IgG in phosphate buffered saline , pH 7.4, 150mM NaCl, 0.02% sodium azide and 50% glycerol. Store at +4°C short term. Store at -20°C long term. Avoid freeze / thaw cycle.

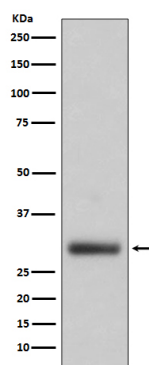
Protein Information

Name	ELANE
Synonyms	ELA2
Function	Serine protease that modifies the functions of natural killer cells, monocytes and granulocytes. Inhibits C5a-dependent neutrophil enzyme release and chemotaxis (PubMed: 15140022). Promotes cleavage of GSDMB, thereby inhibiting pyroptosis (PubMed: 36899106). Promotes blood coagulation (PubMed: 20676107). Through the activation of the platelet fibrinogen receptor integrin alpha-IIb/beta-3, potentiates platelet aggregation induced by a threshold concentration of cathepsin G (CTSG) (PubMed: 25211214 , PubMed: 9111081). Cleaves and thus inactivates tissue factor pathway inhibitor (TFPI) (PubMed: 20676107 , PubMed: 25211214). Capable of killing E.coli but not S.aureus in vitro; digests outer membrane protein A (ompA) in E.coli and K.pneumoniae (PubMed: 10947984).
Cellular Location	Cytoplasmic vesicle, phagosome. Note=Localized in phagolysosomes following ingestion of E.coli by neutrophils

Tissue Location

Bone marrow cells. Neutrophil (PubMed:10947984).

Images



Western blot analysis of Neutrophil Elastase expression in HL60 cell lysate.

Please note: All products are 'FOR RESEARCH USE ONLY. NOT FOR USE IN DIAGNOSTIC OR THERAPEUTIC PROCEDURES'.