

S100A10 Antibody

Rabbit mAb

Catalog # AP91078

Product Information

Application	WB, IHC
Primary Accession	P60903
Reactivity	Human, Mouse
Clonality	Monoclonal
Other Names	Protein S100-A10; Calpactin I light chain; Calpactin-1 light chain; S100A10; ANX2LG; CAL1L; CLP11;
Isotype	Rabbit IgG
Host	Rabbit
Calculated MW	11203

Additional Information

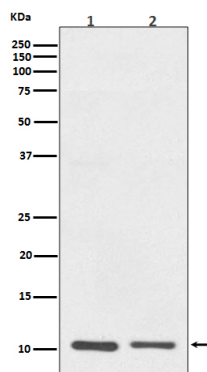
Dilution	WB 1:500~1:2000 IHC 1:100~1:500
Purification	Affinity-chromatography
Immunogen	A synthesized peptide derived from human S100A10
Description	S100A10 acts as a cellular chaperone for hepatitis B (Hep B) virus polymerase. Hep B virus polymerase normally localizes to the cytoplasm only, though in the presence of S-100A10 a portion relocates to the nucleus, implying a role for S100A10 and intracellular calcium in the process of viral replication.
Storage Condition and Buffer	Rabbit IgG in phosphate buffered saline , pH 7.4, 150mM NaCl, 0.02% sodium azide and 50% glycerol. Store at +4°C short term. Store at -20°C long term. Avoid freeze / thaw cycle.

Protein Information

Name	S100A10
Synonyms	ANX2LG, CAL1L, CLP11
Function	Because S100A10 induces the dimerization of ANXA2/p36, it may function as a regulator of protein phosphorylation in that the ANXA2 monomer is the preferred target (in vitro) of tyrosine-specific kinase.

Images

Western blot analysis of S100A10 expression in (1) A431 cell lysate; (2) RAW264.7 cell lysate.



Please note: All products are 'FOR RESEARCH USE ONLY. NOT FOR USE IN DIAGNOSTIC OR THERAPEUTIC PROCEDURES'.