

KLF4 Antibody

Rabbit mAb

Catalog # AP91079

Product Information

Application	WB, IHC, IF, ICC, IHF
Primary Accession	O43474
Reactivity	Rat, Human, Mouse
Clonality	Monoclonal
Other Names	Krueppel-like factor 4; KLF4; EZF; GKLF;
Isotype	Rabbit IgG
Host	Rabbit
Calculated MW	54671

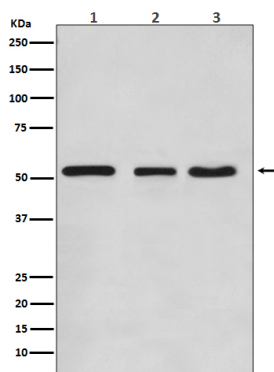
Additional Information

Dilution	WB 1:500~1:2000 IHC 1:50~1:200 ICC/IF 1:50~1:200
Purification	Affinity-chromatography
Immunogen	A synthesized peptide derived from human KLF4
Description	KLF4 is a member of the erythroid Kruppel-like factor (EKLF) multigene family that is highly expressed in the differentiating layers of the epidermis. KLF4 plays a critical role in the differentiation of epithelial cells and is essential for normal gastric homeostasis and function as both a repressor and activator of transcription.
Storage Condition and Buffer	Rabbit IgG in phosphate buffered saline , pH 7.4, 150mM NaCl, 0.02% sodium azide and 50% glycerol. Store at +4°C short term. Store at -20°C long term. Avoid freeze / thaw cycle.

Protein Information

Name	KLF4 (HGNC:6348)
Synonyms	EZF, GKLF
Function	Transcription factor; can act both as activator and as repressor. Binds the 5'-CACCC-3' core sequence. Binds to the promoter region of its own gene and can activate its own transcription. Regulates the expression of key transcription factors during embryonic development. Plays an important role in maintaining embryonic stem cells, and in preventing their differentiation. Required for establishing the barrier function of the skin and for postnatal maturation and maintenance of the ocular surface. Involved in the differentiation of epithelial cells and may also function in skeletal and kidney development. Contributes to the down-regulation of p53/TP53 transcription.
Cellular Location	Nucleus {ECO:0000250 UniProtKB:Q60793}. Cytoplasm {ECO:0000250 UniProtKB:Q60793}

Images



Western blot analysis of KLF4 expression in (1) HeLa cell lysate; (2) NIH/3T3 cell lysate; (3) C6 cell lysate.

Image not found : 202311/AP91079-IHC.jpg

Immunohistochemical analysis of paraffin-embedded mouse liver, using KLF4 Antibody.

Image not found : 202311/AP91079-IF.jpg

Immunofluorescent analysis of Hela cells, using KLF4 Antibody.

Please note: All products are 'FOR RESEARCH USE ONLY. NOT FOR USE IN DIAGNOSTIC OR THERAPEUTIC PROCEDURES'.