

# NEFH Antibody

Rabbit mAb

Catalog # AP91088

## Product Information

<b>Application</b>	WB, IHC
<b>Primary Accession</b>	<a href="#">P12036</a>
<b>Reactivity</b>	Rat, Human, Mouse
<b>Clonality</b>	Monoclonal
<b>Other Names</b>	NF-H; 200 kDa neurofilament protein; Neurofilament triplet H protein; KIAA0845; NFH; NEFH;
<b>Isotype</b>	Rabbit IgG
<b>Host</b>	Rabbit
<b>Calculated MW</b>	111838

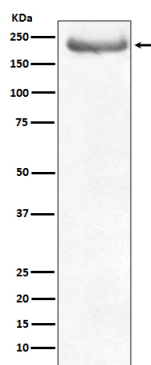
## Additional Information

<b>Dilution</b>	WB 1:500~1:2000 IHC 1:100~1:500
<b>Purification</b>	Affinity-chromatography
<b>Immunogen</b>	A synthesized peptide derived from human NEFH
<b>Description</b>	Neurofilaments usually contain three intermediate filament proteins: L, M, and H which are involved in the maintenance of neuronal caliber. NF-H has an important function in mature axons that is not subserved by the two smaller NF proteins.
<b>Storage Condition and Buffer</b>	Rabbit IgG in phosphate buffered saline , pH 7.4, 150mM NaCl, 0.02% sodium azide and 50% glycerol. Store at +4°C short term. Store at -20°C long term. Avoid freeze / thaw cycle.

## Protein Information

<b>Name</b>	NEFH
<b>Synonyms</b>	KIAA0845, NFH
<b>Function</b>	Neurofilaments usually contain three intermediate filament proteins: NEFL, NEFM, and NEFH which are involved in the maintenance of neuronal caliber. NEFH has an important function in mature axons that is not subserved by the two smaller NF proteins. May additionally cooperate with the neuronal intermediate filament proteins PRPH and INA to form neuronal filamentous networks (By similarity).
<b>Cellular Location</b>	Cytoplasm, cytoskeleton. Cell projection, axon {ECO:0000250 UniProtKB:P19246}

## Images



Western blot analysis of NEFH expression in human brain lysate.

Please note: All products are 'FOR RESEARCH USE ONLY. NOT FOR USE IN DIAGNOSTIC OR THERAPEUTIC PROCEDURES'.