

CD19 Antibody

Rabbit mAb

Catalog # AP91090

Product Information

Application	WB, FC
Primary Accession	P15391
Reactivity	Rat, Human, Mouse
Clonality	Monoclonal
Other Names	B-lymphocyte antigen CD19; T-cell surface antigen Leu-12;
Isotype	Rabbit IgG
Host	Rabbit
Calculated MW	61128

Additional Information

Dilution	WB 1:500~1:1000 FC 1:50
Purification	Affinity-chromatography
Immunogen	A synthesized peptide derived from human CD19
Description	CD19 is a transmembrane glycoprotein that contains two extracellular immunoglobulin-like domains. Assembles with the antigen receptor of B lymphocytes in order to decrease the threshold for antigen receptor-dependent stimulation.
Storage Condition and Buffer	Rabbit IgG in phosphate buffered saline , pH 7.4, 150mM NaCl, 0.02% sodium azide and 50% glycerol. Store at +4°C short term. Store at -20°C long term. Avoid freeze / thaw cycle.

Protein Information

Name	CD19
Function	Functions as a coreceptor for the B-cell antigen receptor complex (BCR) on B-lymphocytes (PubMed: 29523808). Decreases the threshold for activation of downstream signaling pathways and for triggering B-cell responses to antigens (PubMed: 1373518 , PubMed: 16672701 , PubMed: 2463100). Activates signaling pathways that lead to the activation of phosphatidylinositol 3-kinase and the mobilization of intracellular Ca(2+) stores (PubMed: 12387743 , PubMed: 16672701 , PubMed: 9317126 , PubMed: 9382888). Is not required for early steps during B cell differentiation in the blood marrow (PubMed: 9317126). Required for normal differentiation of B-1 cells (By similarity). Required for normal B cell differentiation and proliferation in response to antigen challenges (PubMed: 1373518 , PubMed: 2463100). Required for normal levels of serum immunoglobulins, and for production of high-affinity antibodies in response to antigen challenge (PubMed: 12387743 , PubMed: 16672701 , PubMed: 9317126).

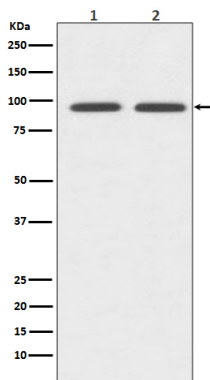
Cellular Location

Cell membrane; Single-pass type I membrane protein. Membrane raft {ECO:0000250|UniProtKB:P25918}; Single-pass type I membrane protein {ECO:0000250|UniProtKB:P25918}

Tissue Location

Detected on marginal zone and germinal center B cells in lymph nodes (PubMed:2463100). Detected on blood B cells (at protein level) (PubMed:16672701, PubMed:2463100)

Images



Western blot analysis of CD19 expression in (1) Jurkat cell lysate; (2) Rat spleen lysate.

Please note: All products are 'FOR RESEARCH USE ONLY. NOT FOR USE IN DIAGNOSTIC OR THERAPEUTIC PROCEDURES'.