

SERPINA1 Antibody

Rabbit mAb

Catalog # AP91094

Product Information

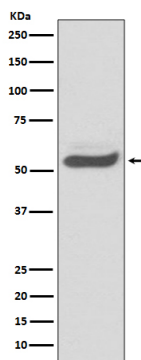
Application	WB, IHC, IF, ICC, IP, IHF
Primary Accession	P01009
Reactivity	Human
Clonality	Monoclonal
Other Names	Serpin A1; Short peptide from AAT; SPAAT; AAT;
Isotype	Rabbit IgG
Host	Rabbit
Calculated MW	51 KDa

Additional Information

Dilution	WB 1:500~1:2000 IHC 1:50~1:200 ICC/IF 1:50~1:200 IP 1:30
Purification	Affinity-chromatography
Immunogen	A synthesized peptide derived from human SERPINA1
Description	SERPINA1 is secreted and is a serine protease inhibitor which its targets include elastase, plasmin, collagenase, thrombin, leucocytic proteases, trypsin, chymotrypsin, and plasminogen activator. Inhibitor of serine proteases. Its primary target is elastase, but it also has a moderate affinity for plasmin and thrombin.
Storage Condition and Buffer	Rabbit IgG in phosphate buffered saline , pH 7.4, 150mM NaCl, 0.02% sodium azide and 50% glycerol. Store at +4°C short term. Store at -20°C long term. Avoid freeze / thaw cycle.

Protein Information

Images



Western blot analysis of SERPINA1 expression in human fetal kidney lysate.

Please note: All products are 'FOR RESEARCH USE ONLY. NOT FOR USE IN DIAGNOSTIC OR THERAPEUTIC PROCEDURES'.