

# SOD1 Antibody

Rabbit mAb

Catalog # AP91097

## Product Information

---

<b>Application</b>	WB, IHC, IF, FC, ICC, IHF
<b>Primary Accession</b>	<a href="#">P00441</a>
<b>Reactivity</b>	Rat, Human, Mouse
<b>Clonality</b>	Monoclonal
<b>Other Names</b>	ALS1; HEL S 44; Homodimer; hSod1; Indophenoloxidase A; IPOA; SOD1; SOD2; SODC;
<b>Isotype</b>	Rabbit IgG
<b>Host</b>	Rabbit
<b>Calculated MW</b>	15936

## Additional Information

---

<b>Dilution</b>	WB 1:500~1:2000 IHC 1:50~1:200 ICC/IF 1:50~1:200 FC 1:50
<b>Purification</b>	Affinity-chromatography
<b>Immunogen</b>	A synthesized peptide derived from human SOD1
<b>Description</b>	SOD1, Cu/Zn superoxide dismutase, is a major antioxidant enzyme that catalyzes the conversion of superoxide anion to hydrogen peroxide and molecular oxygen. The mechanism by which mutant SOD1 induces the neurodegeneration observed in ALS is still unclear. Mutant SOD1 proteins become misfolded and consequently oligomerize into high molecular weight species that aggregate and end up in proteinaceous inclusions.
<b>Storage Condition and Buffer</b>	Rabbit IgG in phosphate buffered saline , pH 7.4, 150mM NaCl, 0.02% sodium azide and 50% glycerol. Store at +4°C short term. Store at -20°C long term. Avoid freeze / thaw cycle.

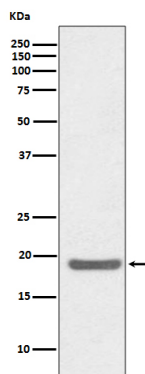
## Protein Information

---

<b>Name</b>	SOD1 ( <a href="#">HGNC:11179</a> )
<b>Function</b>	Destroys radicals which are normally produced within the cells and which are toxic to biological systems (PubMed: <a href="#">24140062</a> ). Catalyzes the oxidation of hydrogen sulfide (H <sub>2</sub> S) to sulfate, playing an important role in detoxifying H <sub>2</sub> S and limiting the accumulation of reactive sulfur species (RSS) such as persulfides and polysulfides (PubMed: <a href="#">36630448</a> ).
<b>Cellular Location</b>	Cytoplasm. Nucleus. Note=Predominantly cytoplasmic; the pathogenic variants ALS1 Arg-86 and Ala-94 gradually aggregates and accumulates in mitochondria.

## Images

---



Western blot analysis of CD80 expression in Jurkat cell lysate.

Please note: All products are 'FOR RESEARCH USE ONLY. NOT FOR USE IN DIAGNOSTIC OR THERAPEUTIC PROCEDURES'.