

# CD19 Antibody

Rabbit mAb

Catalog # AP91098

## Product Information

<b>Application</b>	WB, IHC, IF, FC, ICC, IHF
<b>Primary Accession</b>	<a href="#">P15391</a>
<b>Reactivity</b>	Human
<b>Clonality</b>	Monoclonal
<b>Other Names</b>	B-lymphocyte antigen CD19; B-lymphocyte surface antigen B4;
<b>Isotype</b>	Rabbit IgG
<b>Host</b>	Rabbit
<b>Calculated MW</b>	61128

## Additional Information

<b>Dilution</b>	WB 1:500~1:2000 IHC 1:50~1:200 ICC/IF 1:50~1:200 FC 1:50
<b>Purification</b>	Affinity-chromatography
<b>Immunogen</b>	A synthesized peptide derived from human CD19
<b>Description</b>	CD19 is a transmembrane glycoprotein that contains two extracellular immunoglobulin-like domains. Assembles with the antigen receptor of B lymphocytes in order to decrease the threshold for antigen receptor-dependent stimulation.
<b>Storage Condition and Buffer</b>	Rabbit IgG in phosphate buffered saline , pH 7.4, 150mM NaCl, 0.02% sodium azide and 50% glycerol. Store at +4°C short term. Store at -20°C long term. Avoid freeze / thaw cycle.

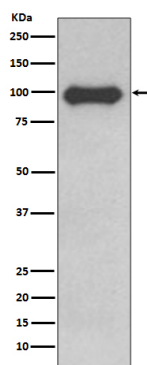
## Protein Information

<b>Name</b>	CD19
<b>Function</b>	Functions as a coreceptor for the B-cell antigen receptor complex (BCR) on B-lymphocytes (PubMed: <a href="#">29523808</a> ). Decreases the threshold for activation of downstream signaling pathways and for triggering B-cell responses to antigens (PubMed: <a href="#">1373518</a> , PubMed: <a href="#">16672701</a> , PubMed: <a href="#">2463100</a> ). Activates signaling pathways that lead to the activation of phosphatidylinositol 3-kinase and the mobilization of intracellular Ca(2+) stores (PubMed: <a href="#">12387743</a> , PubMed: <a href="#">16672701</a> , PubMed: <a href="#">9317126</a> , PubMed: <a href="#">9382888</a> ). Is not required for early steps during B cell differentiation in the blood marrow (PubMed: <a href="#">9317126</a> ). Required for normal differentiation of B-1 cells (By similarity). Required for normal B cell differentiation and proliferation in response to antigen challenges (PubMed: <a href="#">1373518</a> , PubMed: <a href="#">2463100</a> ). Required for normal levels of serum immunoglobulins, and for production of high-affinity antibodies in response to antigen challenge (PubMed: <a href="#">12387743</a> , PubMed: <a href="#">16672701</a> , PubMed: <a href="#">9317126</a> ).

<b>Cellular Location</b>	Cell membrane; Single-pass type I membrane protein. Membrane raft {ECO:0000250 UniProtKB:P25918}; Single-pass type I membrane protein {ECO:0000250 UniProtKB:P25918}
<b>Tissue Location</b>	Detected on marginal zone and germinal center B cells in lymph nodes (PubMed:2463100). Detected on blood B cells (at protein level) (PubMed:16672701, PubMed:2463100)

## Images

---



Western blot analysis of CD19 expression in Ramos cell lysate.

Please note: All products are 'FOR RESEARCH USE ONLY. NOT FOR USE IN DIAGNOSTIC OR THERAPEUTIC PROCEDURES'.