

CD90 Antibody

Rabbit mAb

Catalog # AP91101

Product Information

Application	WB, IHC, IF, ICC, IHF
Primary Accession	P04216
Reactivity	Human
Clonality	Monoclonal
Other Names	Thy-1 membrane glycoprotein; Thy-1 antigen; CDw90; CD90; THY1;
Isotype	Rabbit IgG
Host	Rabbit
Calculated MW	17935

Additional Information

Dilution	WB 1:500~1:2000 IHC 1:50~1:200 ICC/IF 1:50~1:200
Purification	Affinity-chromatography
Immunogen	A synthesized peptide derived from human CD90
Description	The Thy1 cell surface antigen is a GPI-anchored, developmentally regulated protein involved in signaling cascades that mediate neurite outgrowth, T cell activation, tumor suppression, apoptosis, and fibrosis. May play a role in cell-cell or cell-ligand interactions during synaptogenesis and other events in the brain.
Storage Condition and Buffer	Rabbit IgG in phosphate buffered saline , pH 7.4, 150mM NaCl, 0.02% sodium azide and 50% glycerol. Store at +4°C short term. Store at -20°C long term. Avoid freeze / thaw cycle.

Protein Information

Name	THY1
Function	May play a role in cell-cell or cell-ligand interactions during synaptogenesis and other events in the brain.
Cellular Location	Cell membrane; Lipid-anchor, GPI- anchor

Images

Western blot analysis of CD90 expression in human fetal brain lysate.

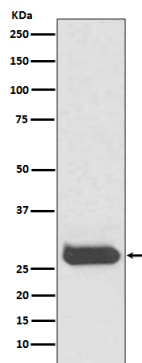


Image not found : 202311/AP91101-IHC.jpg

Immunohistochemical analysis of paraffin-embedded human kidney, using CD90 Antibody.

Image not found : 202311/AP91101-IF.jpg

Immunofluorescent analysis of U87-MG cells, using CD90 Antibody.

Please note: All products are 'FOR RESEARCH USE ONLY. NOT FOR USE IN DIAGNOSTIC OR THERAPEUTIC PROCEDURES'.