

Prealbumin Antibody

Rabbit mAb

Catalog # AP91107

Product Information

| | |
|--------------------------|--|
| Application | WB, IHC, IP |
| Primary Accession | P02766 |
| Reactivity | Human |
| Clonality | Monoclonal |
| Other Names | Amyloid polyneuropathy; Amyloidosis I; ATTR; CTS; PALB; Prealbumin amyloidosis type I; Prealbumin; |
| Isotype | Rabbit IgG |
| Host | Rabbit |
| Calculated MW | 15887 |

Additional Information

| | |
|-------------------------------------|---|
| Dilution | WB 1:500~1:2000 IHC 1:50~1:200 IP 1:50 |
| Purification | Affinity-chromatography |
| Immunogen | A synthesized peptide derived from human Prealbumin |
| Description | Thyroid hormone-binding protein. Probably transports thyroxine from the bloodstream to the brain. |
| Storage Condition and Buffer | Rabbit IgG in phosphate buffered saline , pH 7.4, 150mM NaCl, 0.02% sodium azide and 50% glycerol. Store at +4°C short term. Store at -20°C long term. Avoid freeze / thaw cycle. |

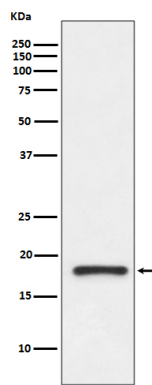
Protein Information

| | |
|--------------------------|---|
| Name | TTR |
| Synonyms | PALB |
| Function | Thyroid hormone-binding protein. Probably transports thyroxine from the bloodstream to the brain. |
| Cellular Location | Secreted. Cytoplasm. |
| Tissue Location | Detected in serum and cerebrospinal fluid (at protein level). Highly expressed in choroid plexus epithelial cells Detected in retina pigment epithelium and liver |

Images

Western blot analysis of Prealbumin gamma expression

in human fetal kidney lysate.



Please note: All products are 'FOR RESEARCH USE ONLY. NOT FOR USE IN DIAGNOSTIC OR THERAPEUTIC PROCEDURES'.