

# TRX1 Antibody

Rabbit mAb

Catalog # AP91110

## Product Information

<b>Application</b>	WB, FC
<b>Primary Accession</b>	<a href="#">P10599</a>
<b>Reactivity</b>	Rat, Human, Mouse
<b>Clonality</b>	Monoclonal
<b>Other Names</b>	TXN; ADF; ATL-derived factor; SASP; Thioredoxin; TRX1; Thioredoxin delta 3; TRX; TXN delta 3; TRDX;
<b>Isotype</b>	Rabbit IgG
<b>Host</b>	Rabbit
<b>Calculated MW</b>	11737

## Additional Information

<b>Dilution</b>	WB 1:1000~1:5000 FC 1:100
<b>Purification</b>	Affinity-chromatography
<b>Immunogen</b>	A synthesized peptide derived from human TRX1
<b>Description</b>	Thioredoxin (Trx) is a redox protein that is found in several species, such as bacteria, plants and mammals, and contains a conserved active site, consisting of Trp-Cys-Gly-Pro-Cys. Participates in many cellular processes including redox signaling, response to oxidative stress, and protein reduction
<b>Storage Condition and Buffer</b>	Rabbit IgG in phosphate buffered saline , pH 7.4, 150mM NaCl, 0.02% sodium azide and 50% glycerol. Store at +4°C short term. Store at -20°C long term. Avoid freeze / thaw cycle.

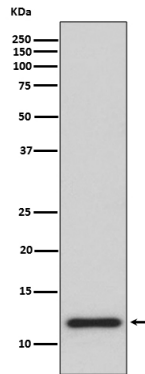
## Protein Information

<b>Name</b>	TXN
<b>Synonyms</b>	TRDX, TRX, TRX1
<b>Function</b>	Participates in various redox reactions through the reversible oxidation of its active center dithiol to a disulfide and catalyzes dithiol-disulfide exchange reactions (PubMed: <a href="#">17182577</a> , PubMed: <a href="#">19032234</a> , PubMed: <a href="#">2176490</a> ). Plays a role in the reversible S- nitrosylation of cysteine residues in target proteins, and thereby contributes to the response to intracellular nitric oxide. Nitrosylates the active site Cys of CASP3 in response to nitric oxide (NO), and thereby inhibits caspase-3 activity (PubMed: <a href="#">16408020</a> , PubMed: <a href="#">17606900</a> ). Induces the FOS/JUN AP-1 DNA-binding activity in ionizing radiation (IR) cells through its oxidation/reduction status and stimulates AP-1 transcriptional activity (PubMed: <a href="#">11118054</a> , PubMed: <a href="#">9108029</a> ).
<b>Cellular Location</b>	Nucleus. Cytoplasm. Secreted Note=Translocates from the cytoplasm into the

nucleus after phorbol 12- myristate 13-acetate induction (PMA) (PubMed:9108029). Predominantly in the cytoplasm in non irradiated cells (PubMed:11118054). Radiation induces translocation of TRX from the cytoplasm to the nucleus (PubMed:11118054). Secreted by a leaderless secretory pathway (PubMed:1332947).

## Images

---



Western blot analysis of TRX1 expression in HeLa cell lysate.

Please note: All products are 'FOR RESEARCH USE ONLY. NOT FOR USE IN DIAGNOSTIC OR THERAPEUTIC PROCEDURES'.