

# NCAM Antibody

Rabbit mAb

Catalog # AP91114

## Product Information

<b>Application</b>	WB, IHC, IF, FC, ICC, IP, IHF
<b>Primary Accession</b>	<a href="#">P13591</a>
<b>Reactivity</b>	Human
<b>Clonality</b>	Monoclonal
<b>Other Names</b>	NCAM1; CD56; MSK39; NCAM-1; NCAM;
<b>Isotype</b>	Rabbit IgG
<b>Host</b>	Rabbit
<b>Calculated MW</b>	94574

## Additional Information

<b>Dilution</b>	WB 1:1000~1:5000 IHC 1:50~1:200 ICC/IF 1:50~1:200 IP 1:50 FC 1:100
<b>Purification</b>	Affinity-chromatography
<b>Immunogen</b>	A synthesized peptide derived from human NCAM
<b>Description</b>	NCAM (neural cell adhesion molecule, CD56) is an adhesion glycoprotein with five extracellular immunoglobulin-like domains followed by two fibronectin type III repeats. NCAM mediates neuronal attachment, neurite extension and cell-cell interactions through homo and heterophilic interactions.
<b>Storage Condition and Buffer</b>	Rabbit IgG in phosphate buffered saline , pH 7.4, 150mM NaCl, 0.02% sodium azide and 50% glycerol. Store at +4°C short term. Store at -20°C long term. Avoid freeze / thaw cycle.

## Protein Information

<b>Name</b>	NCAM1 ( <a href="#">HGNC:7656</a> )
<b>Synonyms</b>	NCAM
<b>Function</b>	This protein is a cell adhesion molecule involved in neuron- neuron adhesion, neurite fasciculation, outgrowth of neurites, etc. (Microbial infection) Acts as a receptor for Zika virus.
<b>Cellular Location</b>	[Isoform 1]: Cell membrane; Single-pass type I membrane protein [Isoform 3]: Cell membrane; Lipid-anchor, GPI- anchor [Isoform 5]: Secreted.

## Images

Western blot analysis of NCAM expression in SH-SY5Y cell lysate.

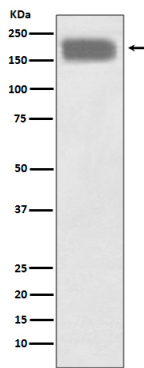


Image not found : 202311/AP91114-wb6.jpg

The SOX4/miR-17-92/RB1 Axis Promotes Prostate Cancer Progression. -Neoplasia

Please note: All products are 'FOR RESEARCH USE ONLY. NOT FOR USE IN DIAGNOSTIC OR THERAPEUTIC PROCEDURES'.