

# Serum Albumin Antibody

Rabbit mAb

Catalog # AP91126

## Product Information

<b>Application</b>	WB, IHC
<b>Primary Accession</b>	<a href="#">P02768</a>
<b>Reactivity</b>	Rat, Human, Mouse, Bovine
<b>Clonality</b>	Monoclonal
<b>Other Names</b>	ALB; Albumin (32 AA) ;Albumin (AA 34) ;Albumin; BSA; Serum albumin; Bovine Serum Albumin
<b>Isotype</b>	Rabbit IgG
<b>Host</b>	Rabbit
<b>Calculated MW</b>	69367

## Additional Information

<b>Dilution</b>	WB 1:500~1:2000 IHC 1:50~1:200
<b>Purification</b>	Affinity-chromatography
<b>Immunogen</b>	A synthesized peptide derived from Cow Bovine Serum Albumin
<b>Description</b>	Albumin is a soluble, monomeric protein which comprises about one-half of the blood serum protein. Albumin functions primarily as a carrier protein for steroids, fatty acids, and thyroid hormones and plays a role in stabilizing extracellular fluid volume.
<b>Storage Condition and Buffer</b>	Rabbit IgG in phosphate buffered saline , pH 7.4, 150mM NaCl, 0.02% sodium azide and 50% glycerol. Store at +4°C short term. Store at -20°C long term. Avoid freeze / thaw cycle.

## Protein Information

<b>Name</b>	ALB
<b>Function</b>	Binds water, Ca(2+), Na(+), K(+), fatty acids, hormones, bilirubin and drugs (Probable). Its main function is the regulation of the colloidal osmotic pressure of blood (Probable). Major zinc transporter in plasma, typically binds about 80% of all plasma zinc (PubMed: <a href="#">19021548</a> ). Major calcium and magnesium transporter in plasma, binds approximately 45% of circulating calcium and magnesium in plasma (By similarity). Potentially has more than two calcium-binding sites and might additionally bind calcium in a non-specific manner (By similarity). The shared binding site between zinc and calcium at residue Asp-273 suggests a crosstalk between zinc and calcium transport in the blood (By similarity). The rank order of affinity is zinc > calcium > magnesium (By similarity). Binds to the bacterial siderophore enterobactin and inhibits enterobactin-mediated iron uptake of E.coli from ferric transferrin, and may thereby limit the utilization of iron and growth of enteric bacteria such as E.coli (PubMed: <a href="#">6234017</a> ). Does not prevent iron

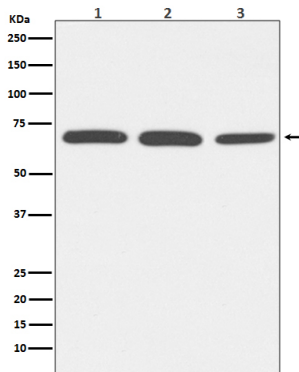
uptake by the bacterial siderophore aerobactin (PubMed:[6234017](#)).

**Cellular Location** Secreted.

**Tissue Location** Plasma.

## Images

---



Western blot analysis of Bovine Serum Albumin expression in (1) HeLa cell lysate; (2) NIH/3T3 cell lysate; (3) PC-12 cell lysate.

Image not found : 202311/AP91126-IHC.jpg

Immunohistochemical analysis of paraffin-embedded human liver, using Bovine Serum Albumin Antibody.

Please note: All products are 'FOR RESEARCH USE ONLY. NOT FOR USE IN DIAGNOSTIC OR THERAPEUTIC PROCEDURES'.