

# TRF1 Antibody

Rabbit mAb

Catalog # AP91131

## Product Information

<b>Application</b>	WB, IF, ICC
<b>Primary Accession</b>	<a href="#">P54274</a>
<b>Reactivity</b>	Human, Mouse
<b>Clonality</b>	Monoclonal
<b>Other Names</b>	TERF1; PIN2; TRBF1; TRF1;
<b>Isotype</b>	Rabbit IgG
<b>Host</b>	Rabbit
<b>Calculated MW</b>	50246

## Additional Information

<b>Dilution</b>	WB 1:500~1:2000 ICC/IF 1:50~1:200
<b>Purification</b>	Affinity-chromatography
<b>Immunogen</b>	A synthesized peptide derived from human TRF1
<b>Description</b>	Plays an influential role in cellular immortalization and cellular senescence. TRF1 negatively regulates telomere elongation, while TRF2 protects the chromosome ends by inhibiting end-to-end fusions. Down-regulation of TRF expression in tumor cells may contribute to cell immortalization and malignant progression.
<b>Storage Condition and Buffer</b>	Rabbit IgG in phosphate buffered saline , pH 7.4, 150mM NaCl, 0.02% sodium azide and 50% glycerol. Store at +4°C short term. Store at -20°C long term. Avoid freeze / thaw cycle.

## Protein Information

<b>Name</b>	TERF1
<b>Synonyms</b>	PIN2, TRBF1, TRF, TRF1
<b>Function</b>	Binds the telomeric double-stranded 5'-TTAGGG-3' repeat and negatively regulates telomere length. Involved in the regulation of the mitotic spindle. Component of the shelterin complex (telosome) that is involved in the regulation of telomere length and protection. Shelterin associates with arrays of double-stranded 5'-TTAGGG-3' repeats added by telomerase and protects chromosome ends; without its protective activity, telomeres are no longer hidden from the DNA damage surveillance and chromosome ends are inappropriately processed by DNA repair pathways.
<b>Cellular Location</b>	Nucleus. Cytoplasm, cytoskeleton, spindle. Chromosome, telomere. Note=Colocalizes with telomeric DNA in interphase and prophase cells. Telomeric localization decreases in metaphase, anaphase and telophase.

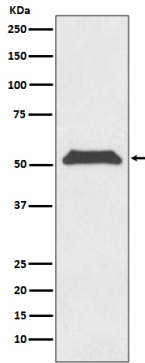
Associates with the mitotic spindle (PubMed:11943150). Colocalizes with TRIOBP isoform 1 at the telomeres in interphase (PubMed:24692559)

## Tissue Location

Highly expressed and ubiquitous. Isoform Pin2 predominates

## Images

---



Western blot analysis of TRF1 expression in HeLa cell lysate.

Please note: All products are 'FOR RESEARCH USE ONLY. NOT FOR USE IN DIAGNOSTIC OR THERAPEUTIC PROCEDURES'.