

# ApoB Antibody

Rabbit mAb

Catalog # AP91137

## Product Information

---

<b>Application</b>	WB, FC, IP
<b>Primary Accession</b>	<a href="#">P04114</a>
<b>Reactivity</b>	Human
<b>Clonality</b>	Monoclonal
<b>Other Names</b>	ApoB 100; ApoB 48; Apolipoprotein B 100; Apolipoprotein B48; FLDB;
<b>Isotype</b>	Rabbit IgG
<b>Host</b>	Rabbit
<b>Calculated MW</b>	515545

## Additional Information

---

<b>Dilution</b>	WB 1:500~1:2000 FC 1:100 IP 1:50
<b>Purification</b>	Affinity-chromatography
<b>Immunogen</b>	A synthesized peptide derived from human ApoB
<b>Description</b>	Functions as a recognition signal for the cellular binding and internalization of LDL particles by the apoB/E receptor. Defects in APOB are a cause of familial hypobetalipoproteinemia (FHBL). Defects in APOB are a cause of familial ligand-defective apolipoprotein B-100 (FDB).
<b>Storage Condition and Buffer</b>	Rabbit IgG in phosphate buffered saline , pH 7.4, 150mM NaCl, 0.02% sodium azide and 50% glycerol. Store at +4°C short term. Store at -20°C long term. Avoid freeze / thaw cycle.

## Protein Information

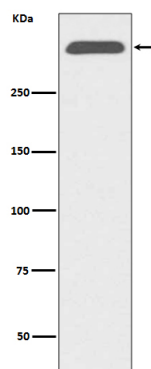
---

<b>Name</b>	APOB
<b>Function</b>	Apolipoprotein B is a major protein constituent of chylomicrons (apo B-48), LDL (apo B-100) and VLDL (apo B-100). Apo B- 100 functions as a recognition signal for the cellular binding and internalization of LDL particles by the apoB/E receptor.
<b>Cellular Location</b>	Cytoplasm. Secreted. Lipid droplet

## Images

---

Western blot analysis of ApoB expression in human serum lysate.



Please note: All products are 'FOR RESEARCH USE ONLY. NOT FOR USE IN DIAGNOSTIC OR THERAPEUTIC PROCEDURES'.