

AFP Antibody

Rabbit mAb

Catalog # AP91139

Product Information

| | |
|--------------------------|---------------------------------------------------------------|
| Application | WB, IHC, IF, FC, ICC, IP, IHF |
| Primary Accession | P02771 |
| Reactivity | Human |
| Clonality | Monoclonal |
| Other Names | Alpha fetoglobulin; Alpha fetoprotein precursor; FETA; HPAFP; |
| Isotype | Rabbit IgG |
| Host | Rabbit |
| Calculated MW | 68678 |

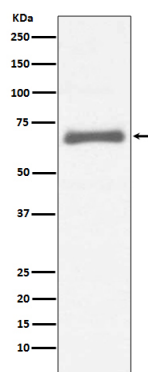
Additional Information

| | |
|-------------------------------------|---------------------------------------------------------------------------------------------------------------------------------------------------------------------------------------------------------------------------------------------------------------------------------------------------------------------------------------------------------------------------------------------------------------------------|
| Dilution | WB 1:500~1:2000 IHC 1:50~1:200 ICC/IF 1:50~1:200 IP 1:50 FC 1:50 |
| Purification | Affinity-chromatography |
| Immunogen | A synthesized peptide derived from human AFP |
| Description | Alpha-fetoprotein (AFP) is a 65 kDa glycoprotein found in the mammalian fetal liver, yolk sac, and GI tract. In normal adult cells, p53 binds to the repressor region of the AFP gene, thereby blocking transcription. Mutations in both p53 and β -catenin are associated with aberrant expression of AFP. Research studies have shown that elevated serum AFP levels are predictive of hepatocellular carcinoma . |
| Storage Condition and Buffer | Rabbit IgG in phosphate buffered saline , pH 7.4, 150mM NaCl, 0.02% sodium azide and 50% glycerol. Store at +4°C short term. Store at -20°C long term. Avoid freeze / thaw cycle. |

Protein Information

| | |
|--------------------------|-------------------------------------------------------------------------------------------------------------------------------------------------------------------------------------------|
| Name | AFP |
| Synonyms | HPAFP |
| Function | Binds copper, nickel, and fatty acids as well as, and bilirubin less well than, serum albumin. Only a small percentage (less than 2%) of the human AFP shows estrogen-binding properties. |
| Cellular Location | Secreted. |
| Tissue Location | Plasma. Synthesized by the fetal liver and yolk sac |

Images



Western blot analysis of AFP expression in HepG2 cell lysate.

Please note: All products are 'FOR RESEARCH USE ONLY. NOT FOR USE IN DIAGNOSTIC OR THERAPEUTIC PROCEDURES'.