

Actin Antibody

Rabbit mAb

Catalog # AP91147

Product Information

Application	WB, IF, FC, ICC
Primary Accession	P68133
Reactivity	Rat, Human, Mouse, Chicken
Clonality	Monoclonal
Other Names	ACTA; ACTA1; Actin alpha skeletal muscle; Alpha Actin 1; alpha-actin; Alpha-actin-1; ASMA; CFTD; CFTD1; CFTDM;
Isotype	Rabbit IgG
Host	Rabbit
Calculated MW	42051

Additional Information

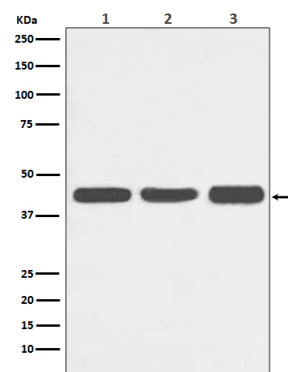
Dilution	WB 1:1000~1:5000 ICC/IF 1:50~1:200 FC 1:50
Purification	Affinity-chromatography
Immunogen	A synthesized peptide derived from human Actin
Description	Actins are highly conserved proteins that are involved in various types of cell motility and are ubiquitously expressed in all eukaryotic cells.
Storage Condition and Buffer	Rabbit IgG in phosphate buffered saline , pH 7.4, 150mM NaCl, 0.02% sodium azide and 50% glycerol. Store at +4°C short term. Store at -20°C long term. Avoid freeze / thaw cycle.

Protein Information

Name	ACTA1
Synonyms	ACTA
Function	Actins are highly conserved proteins that are involved in various types of cell motility and are ubiquitously expressed in all eukaryotic cells.
Cellular Location	Cytoplasm, cytoskeleton.

Images

Western blot analysis of Actin expression in (1) HeLa cell lysate; (2) NIH/3T3 cell lysate; (3) C6 cell lysate.



Please note: All products are 'FOR RESEARCH USE ONLY. NOT FOR USE IN DIAGNOSTIC OR THERAPEUTIC PROCEDURES'.