

Bcl-2 Antibody

Rabbit mAb

Catalog # AP91148

Product Information

Application	WB, IHC, IF, FC, ICC, IHF
Primary Accession	P10415
Reactivity	Human, Mouse
Clonality	Monoclonal
Other Names	Apoptosis regulator Bcl-2; BCL2;
Isotype	Rabbit IgG
Host	Rabbit
Calculated MW	26266

Additional Information

Dilution	WB 1:1000~1:2000 IHC 1:50~1:200 ICC/IF 1:50~1:200 FC 1:50
Purification	Affinity-chromatography
Immunogen	A synthesized peptide derived from human Bcl-2
Description	This gene encodes an integral outer mitochondrial membrane protein that blocks the apoptotic death of some cells such as lymphocytes. Constitutive expression of BCL2, such as in the case of translocation of BCL2 to Ig heavy chain locus, is thought to be the cause of follicular lymphoma. Two transcript variants, produced by alternate splicing, differ in their C-terminal ends.
Storage Condition and Buffer	Rabbit IgG in phosphate buffered saline , pH 7.4, 150mM NaCl, 0.02% sodium azide and 50% glycerol. Store at +4°C short term. Store at -20°C long term. Avoid freeze / thaw cycle.

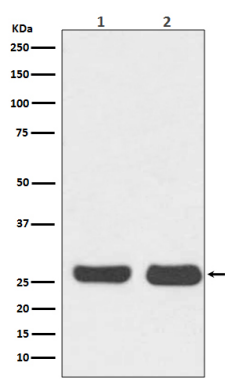
Protein Information

Name	BCL2
Function	Suppresses apoptosis in a variety of cell systems including factor-dependent lymphohematopoietic and neural cells (PubMed: 1508712 , PubMed: 8183370). Regulates cell death by controlling the mitochondrial membrane permeability (PubMed: 11368354). Appears to function in a feedback loop system with caspases (PubMed: 11368354). Inhibits caspase activity either by preventing the release of cytochrome c from the mitochondria and/or by binding to the apoptosis-activating factor (APAF-1) (PubMed: 11368354). Also acts as an inhibitor of autophagy: interacts with BECN1 and AMBRA1 during non-starvation conditions and inhibits their autophagy function (PubMed: 18570871 , PubMed: 20889974 , PubMed: 21358617). May attenuate inflammation by impairing NLRP1- inflammasome activation, hence CASP1 activation and IL1B release (PubMed: 17418785).
Cellular Location	Mitochondrion outer membrane; Single-pass membrane protein. Nucleus

membrane; Single-pass membrane protein. Endoplasmic reticulum
membrane; Single-pass membrane protein. Cytoplasm
{ECO:0000250|UniProtKB:P10417}

Tissue Location Expressed in a variety of tissues.

Images



Western blot analysis of Bcl-2 expression in (1) HeLa cell lysate; (2) NIH/3T3 cell lysate.

Image not found : 202311/AP91148-IHC.jpg	Immunohistochemical analysis of paraffin-embedded human tonsil, using Bcl-2 Antibody.
Image not found : 202311/AP91148-IF.jpg	Immunofluorescent analysis of Jurkat cells, using Bcl-2 Antibody .
Image not found : 202311/AP91148-wb5.jpg	Taurine protects INS-1 cells from apoptosis induced by Di(2-ethylhexyl) phthalate via reducing oxidative stress and autophagy. -Toxicology Mechanisms and Methods
Image not found : 202311/AP91148-wb6.jpg	Mechanistic insights into geniposide regulation of bile salt export pump (BSEP) expression. -RSC Advances

Please note: All products are 'FOR RESEARCH USE ONLY. NOT FOR USE IN DIAGNOSTIC OR THERAPEUTIC PROCEDURES'.