

# Ezrin Antibody

Rabbit mAb

Catalog # AP91159

## Product Information

<b>Application</b>	WB, IHC
<b>Primary Accession</b>	<a href="#">P15311</a>
<b>Reactivity</b>	Human
<b>Clonality</b>	Monoclonal
<b>Other Names</b>	CVIL; Cytovillin; Villin2; p81; EZR; VIL2;
<b>Isotype</b>	Rabbit IgG
<b>Host</b>	Rabbit
<b>Calculated MW</b>	69413

## Additional Information

<b>Dilution</b>	WB 1:500~1:2000 IHC 1:50~1:200
<b>Purification</b>	Affinity-chromatography
<b>Immunogen</b>	A synthesized peptide derived from human Ezrin
<b>Description</b>	Probably involved in connections of major cytoskeletal structures to the plasma membrane. In epithelial cells, required for the formation of microvilli and membrane ruffles on the apical pole. Along with PLEKHG6, required for normal macropinocytosis.
<b>Storage Condition and Buffer</b>	Rabbit IgG in phosphate buffered saline , pH 7.4, 150mM NaCl, 0.02% sodium azide and 50% glycerol. Store at +4°C short term. Store at -20°C long term. Avoid freeze / thaw cycle.

## Protein Information

<b>Name</b>	EZR
<b>Synonyms</b>	VIL2
<b>Function</b>	Probably involved in connections of major cytoskeletal structures to the plasma membrane. In epithelial cells, required for the formation of microvilli and membrane ruffles on the apical pole. Along with PLEKHG6, required for normal macropinocytosis.
<b>Cellular Location</b>	Apical cell membrane; Peripheral membrane protein; Cytoplasmic side. Cell projection. Cell projection, microvillus membrane; Peripheral membrane protein; Cytoplasmic side. Cell projection, ruffle membrane; Peripheral membrane protein; Cytoplasmic side. Cytoplasm, cell cortex. Cytoplasm, cytoskeleton. Cell projection, microvillus {ECO:0000250 UniProtKB:P26040}. Note=Localization to the apical membrane of parietal cells depends on the interaction with PALS1 Localizes to cell extensions and peripheral processes of astrocytes (By similarity). Microvillar peripheral membrane protein

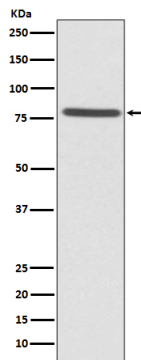
(cytoplasmic side). {ECO:0000250 | UniProtKB:P31977}

## Tissue Location

Expressed in cerebral cortex, basal ganglia, hippocampus, hypophysis, and optic nerve. Weakly expressed in brain stem and diencephalon. Stronger expression was detected in gray matter of frontal lobe compared to white matter (at protein level). Component of the microvilli of intestinal epithelial cells. Preferentially expressed in astrocytes of hippocampus, frontal cortex, thalamus, parahippocampal cortex, amygdala, insula, and corpus callosum. Not detected in neurons in most tissues studied

## Images

---



Western blot analysis of Ezrin expression in HeLa cell lysate.

Please note: All products are 'FOR RESEARCH USE ONLY. NOT FOR USE IN DIAGNOSTIC OR THERAPEUTIC PROCEDURES'.