

CD32 Antibody

Rabbit mAb

Catalog # AP91165

Product Information

Application	WB, IHC
Primary Accession	P12318
Reactivity	Human
Clonality	Monoclonal
Other Names	CD32; CD32A; CD32B; CD32C; FCG2; FcGR; FCGR2; FCGR2A; FCGR2B; FCGR2C; Fcgr3a; FCRII; IGFR2;
Isotype	Rabbit IgG
Host	Rabbit
Calculated MW	35001

Additional Information

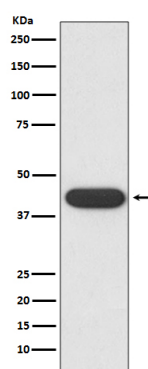
Dilution	WB 1:500~1:2000 IHC 1:50~1:200
Purification	Affinity-chromatography
Immunogen	A synthesized peptide derived from human CD32
Description	Binds to the Fc region of immunoglobulins gamma. Low affinity receptor. By binding to IgG it initiates cellular responses against pathogens and soluble antigens.
Storage Condition and Buffer	Rabbit IgG in phosphate buffered saline , pH 7.4, 150mM NaCl, 0.02% sodium azide and 50% glycerol. Store at +4°C short term. Store at -20°C long term. Avoid freeze / thaw cycle.

Protein Information

Name	FCGR2A
Synonyms	CD32, FCG2, FCGR2A1, IGFR2
Function	Binds to the Fc region of immunoglobulins gamma. Low affinity receptor. By binding to IgG it initiates cellular responses against pathogens and soluble antigens. Promotes phagocytosis of opsonized antigens.
Cellular Location	Cell membrane; Single-pass type I membrane protein
Tissue Location	Found on monocytes, neutrophils and eosinophil platelets

Images

Western blot analysis of CD32 expression in K562 cell



lysate.

Please note: All products are 'FOR RESEARCH USE ONLY. NOT FOR USE IN DIAGNOSTIC OR THERAPEUTIC PROCEDURES'.