

# Cathepsin L/V/K/H Antibody

Rabbit mAb

Catalog # AP91176

## Product Information

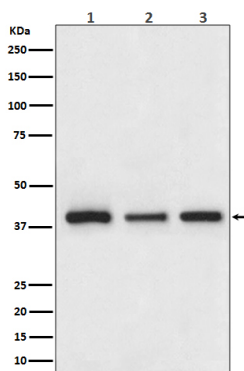
|                          |   |
|--------------------------|---|
| <b>Application</b>       | WB, IHC, IF, FC, ICC, IHF                   |
| <b>Primary Accession</b> | <a href="#">P07711/O60911/P43235/P09668</a> |
| <b>Reactivity</b>        | Rat, Human, Mouse                           |
| <b>Clonality</b>         | Monoclonal                                  |
| <b>Other Names</b>       | Cathepsin; CTSL; CTSV; CTSK; CTSH;          |
| <b>Isotype</b>           | Rabbit IgG                                  |
| <b>Host</b>              | Rabbit                                      |
| <b>Calculated MW</b>     | 38 KDa                                      |

## Additional Information

|                                     |   |
|-------------------------------------|---|
| <b>Dilution</b>                     | WB 1:500~1:2000 IHC 1:50~1:200 ICC/IF 1:50~1:200 FC 1:50  |
| <b>Purification</b>                 | Affinity-chromatography   |
| <b>Immunogen</b>                    | A synthesized peptide derived from human Cathepsin L/V/K/H  |
| <b>Description</b>                  | Closely involved in osteoclastic bone resorption and may participate partially in the disorder of bone remodeling. Displays potent endoprotease activity against fibrinogen at acid pH. May play an important role in extracellular matrix degradation. |
| <b>Storage Condition and Buffer</b> | Rabbit IgG in phosphate buffered saline , pH 7.4, 150mM NaCl, 0.02% sodium azide and 50% glycerol. Store at +4°C short term. Store at -20°C long term. Avoid freeze / thaw cycle.   |

## Protein Information

## Images



Western blot analysis of Cathepsin L/V/K/H expression in (1) HepG2 cell lysate; (2) NIH/3T3 cell lysate; (3) PC-12 cell lysate;

Please note: All products are 'FOR RESEARCH USE ONLY. NOT FOR USE IN DIAGNOSTIC OR THERAPEUTIC PROCEDURES'.