

Growth Hormone Antibody

Rabbit mAb

Catalog # AP91188

Product Information

Application	WB, IHC, IP
Primary Accession	P01241
Reactivity	Human
Clonality	Monoclonal
Other Names	GH1; GHN; Growth hormone 1; hGH-N; IGHD1B; Pituitary growth hormone; RNGHGP; Somatotropin;
Isotype	Rabbit IgG
Host	Rabbit
Calculated MW	24847

Additional Information

Dilution	WB 1:500~1:2000 IHC 1:50~1:200 IP 1:20
Purification	Affinity-chromatography
Immunogen	A synthesized peptide derived from human Growth Hormone
Description	Plays an important role in growth control. Its major role in stimulating body growth is to stimulate the liver and other tissues to secrete IGF-1. It stimulates both the differentiation and proliferation of myoblasts. It also stimulates amino acid uptake and protein synthesis in muscle and other tissues.
Storage Condition and Buffer	Rabbit IgG in phosphate buffered saline , pH 7.4, 150mM NaCl, 0.02% sodium azide and 50% glycerol. Store at +4°C short term. Store at -20°C long term. Avoid freeze / thaw cycle.

Protein Information

Name	GH1
Function	Plays an important role in growth control. Its major role in stimulating body growth is to stimulate the liver and other tissues to secrete IGF1. It stimulates both the differentiation and proliferation of myoblasts. It also stimulates amino acid uptake and protein synthesis in muscle and other tissues.
Cellular Location	Secreted

Images

Western blot analysis of Growth Hormone expression in human placenta lysate.

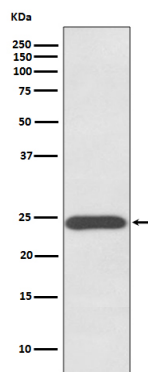


Image not found : 202311/AP91188-IHC.jpg

Immunohistochemical analysis of paraffin-embedded human placenta, using Growth Hormone Antibody.

Please note: All products are 'FOR RESEARCH USE ONLY. NOT FOR USE IN DIAGNOSTIC OR THERAPEUTIC PROCEDURES'.