

Perilipin A Antibody

Rabbit mAb

Catalog # AP91195

Product Information

Application	WB, IF, ICC
Primary Accession	O60240
Reactivity	Human, Mouse
Clonality	Monoclonal
Other Names	Lipid droplet associated protein; PERI; Perilipin-1; PerilipinA; LIN1;
Isotype	Rabbit IgG
Host	Rabbit
Calculated MW	55990

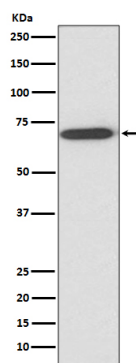
Additional Information

Dilution	WB 1:1000~1:5000 ICC/IF 1:50~1:200
Purification	Affinity-chromatography
Immunogen	A synthesized peptide derived from human Perilipin A
Description	Modulator of adipocyte lipid metabolism. Coats lipid storage droplets to protect them from breakdown by hormone-sensitive lipase (HSL). Its absence may result in leanness.
Storage Condition and Buffer	Rabbit IgG in phosphate buffered saline , pH 7.4, 150mM NaCl, 0.02% sodium azide and 50% glycerol. Store at +4°C short term. Store at -20°C long term. Avoid freeze / thaw cycle.

Protein Information

Name	PLIN1
Synonyms	PERI, PLIN
Function	Modulator of adipocyte lipid metabolism. Coats lipid storage droplets to protect them from breakdown by hormone-sensitive lipase (HSL). Its absence may result in leanness. Plays a role in unilocular lipid droplet formation by activating CIDEC. Their interaction promotes lipid droplet enlargement and directional net neutral lipid transfer. May modulate lipolysis and triglyceride levels.
Cellular Location	Endoplasmic reticulum. Lipid droplet. Note=Lipid droplet surface-associated.
Tissue Location	Detected in adipocytes from white adipose tissue (at protein level) (PubMed:27832861). Detected in visceral adipose tissue and mammary gland (PubMed:9521880)

Images



Western blot analysis of Perilipin A expression in human fetal liver lysate.

Please note: All products are 'FOR RESEARCH USE ONLY. NOT FOR USE IN DIAGNOSTIC OR THERAPEUTIC PROCEDURES'.