

# FGF21 Antibody

Rabbit mAb

Catalog # AP91196

## Product Information

<b>Application</b>	WB, IHC
<b>Primary Accession</b>	<a href="#">Q9NSA1</a>
<b>Reactivity</b>	Rat, Human, Mouse
<b>Clonality</b>	Monoclonal
<b>Other Names</b>	Fgf21; FGFL; Fibroblast growth factor 21; PRO10196; UNQ3115;
<b>Isotype</b>	Rabbit IgG
<b>Host</b>	Rabbit
<b>Calculated MW</b>	22300

## Additional Information

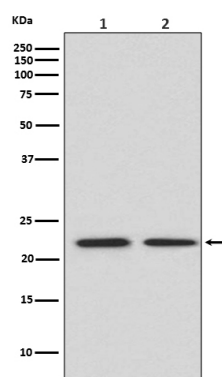
<b>Dilution</b>	WB 1:500~1:2000 IHC 1:50~1:200
<b>Purification</b>	Affinity-chromatography
<b>Immunogen</b>	A synthesized peptide derived from human FGF21
<b>Description</b>	Stimulates glucose uptake in differentiated adipocytes via the induction of glucose transporter SLC2A1/GLUT1 expression (but not SLC2A4/GLUT4 expression). Activity requires the presence of KLB.
<b>Storage Condition and Buffer</b>	Rabbit IgG in phosphate buffered saline , pH 7.4, 150mM NaCl, 0.02% sodium azide and 50% glycerol. Store at +4°C short term. Store at -20°C long term. Avoid freeze / thaw cycle.

## Protein Information

<b>Name</b>	FGF21
<b>Function</b>	Stimulates glucose uptake in differentiated adipocytes via the induction of glucose transporter SLC2A1/GLUT1 expression (but not SLC2A4/GLUT4 expression). Activity requires the presence of KLB. Regulates systemic glucose homeostasis and insulin sensitivity.
<b>Cellular Location</b>	Secreted {ECO:0000250 UniProtKB:Q9JJN1}.

## Images

Western blot analysis of FGF21 expression in (1) HeLa cell lysate; (2) Mouse spleen lysate.



Please note: All products are 'FOR RESEARCH USE ONLY. NOT FOR USE IN DIAGNOSTIC OR THERAPEUTIC PROCEDURES'.