

Cathepsin B Antibody

Rabbit mAb

Catalog # AP91202

Product Information

Application	WB, IHC, IF, ICC, IP, IHF
Primary Accession	P07858
Reactivity	Human
Clonality	Monoclonal
Other Names	APPS; Cathepsin B heavy chain; Cathepsin B1; CathepsinB; CPSB; CTSB; cysteine protease; Preprocathepsin B;
Isotype	Rabbit IgG
Host	Rabbit
Calculated MW	37822

Additional Information

Dilution	WB 1:500~1:2000 IHC 1:50~1:200 ICC/IF 1:50~1:200 IP 1:50
Purification	Affinity-chromatography
Immunogen	A synthesized peptide derived from human Cathepsin B
Description	Thiol protease which is believed to participate in intracellular degradation and turnover of proteins. Has also been implicated in tumor invasion and metastasis.
Storage Condition and Buffer	Rabbit IgG in phosphate buffered saline , pH 7.4, 150mM NaCl, 0.02% sodium azide and 50% glycerol. Store at +4°C short term. Store at -20°C long term. Avoid freeze / thaw cycle.

Protein Information

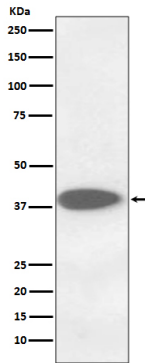
Name	CTSB
Synonyms	CPSB
Function	Thiol protease which is believed to participate in intracellular degradation and turnover of proteins (PubMed: 12220505). Cleaves matrix extracellular phosphoglycoprotein MEPE (PubMed: 12220505). Involved in the solubilization of cross-linked TG/thyroglobulin in the thyroid follicle lumen (By similarity). Has also been implicated in tumor invasion and metastasis (PubMed: 3972105).
Cellular Location	Lysosome. Melanosome. Secreted, extracellular space {ECO:0000250 UniProtKB:A1E295}. Apical cell membrane {ECO:0000250 UniProtKB:P10605}; Peripheral membrane protein {ECO:0000250 UniProtKB:P10605}; Extracellular side {ECO:0000250 UniProtKB:P10605}. Note=Identified by mass spectrometry in melanosome fractions from stage I to stage IV (PubMed:17081065) Localizes

to the lumen of thyroid follicles and to the apical membrane of thyroid epithelial cells (By similarity) {ECO:0000250|UniProtKB:P10605, ECO:0000269|PubMed:17081065}

Tissue Location

Expressed in the stratum spinosum of the epidermis. Weak expression is detected in the stratum granulosum

Images



Western blot analysis of Cathepsin B expression in A375 cell lysate;

Please note: All products are 'FOR RESEARCH USE ONLY. NOT FOR USE IN DIAGNOSTIC OR THERAPEUTIC PROCEDURES'.