

L1CAM Antibody

Rabbit mAb

Catalog # AP91206

Product Information

Application	WB, IHC
Primary Accession	P32004
Reactivity	Human
Clonality	Monoclonal
Other Names	CAML1; CD171; HSAS1; Hyd; L1-NCAM; MASA; MIC5; NCAML1; NILE; S10; SPG1;
Isotype	Rabbit IgG
Host	Rabbit
Calculated MW	140003

Additional Information

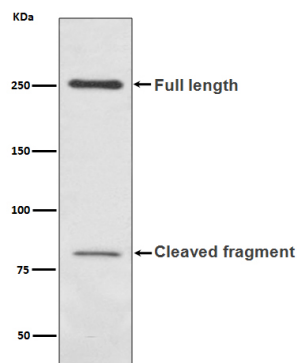
Dilution	WB 1:500~1:2000 IHC 1:50~1:200
Purification	Affinity-chromatography
Immunogen	A synthesized peptide derived from human L1CAM
Description	Cell adhesion molecule with an important role in the development of the nervous system. Involved in neuron-neuron adhesion, neurite fasciculation, outgrowth of neurites, etc. Binds to axonin on neurons.
Storage Condition and Buffer	Rabbit IgG in phosphate buffered saline , pH 7.4, 150mM NaCl, 0.02% sodium azide and 50% glycerol. Store at +4°C short term. Store at -20°C long term. Avoid freeze / thaw cycle.

Protein Information

Name	L1CAM
Synonyms	CAML1, MIC5
Function	Neural cell adhesion molecule involved in the dynamics of cell adhesion and in the generation of transmembrane signals at tyrosine kinase receptors. During brain development, critical in multiple processes, including neuronal migration, axonal growth and fasciculation, and synaptogenesis. In the mature brain, plays a role in the dynamics of neuronal structure and function, including synaptic plasticity.
Cellular Location	Cell membrane; Single-pass type I membrane protein {ECO:0000250 UniProtKB:Q05695}. Cell projection, growth cone {ECO:0000250 UniProtKB:Q05695}. Cell projection, axon. Cell projection, dendrite Note=Colocalized with SHTN1 in close apposition with actin filaments in filopodia and lamellipodia of axonalne growth cones of hippocampal neurons (By similarity). In neurons, detected predominantly in

axons and cell body, weak localization to dendrites (PubMed:20621658)
{ECO:0000250|UniProtKB:Q05695, ECO:0000269|PubMed:20621658}

Images



Western blot analysis of L1CAM expression in human fetal kidney lysate.

Please note: All products are 'FOR RESEARCH USE ONLY. NOT FOR USE IN DIAGNOSTIC OR THERAPEUTIC PROCEDURES'.