

# Integrin beta 4 Antibody

Rabbit mAb

Catalog # AP91207

## Product Information

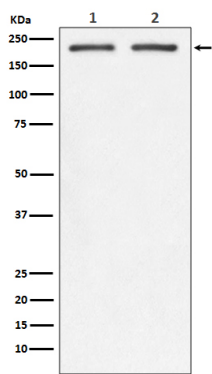
<b>Application</b>	WB, IHC
<b>Primary Accession</b>	<a href="#">P16144</a>
<b>Reactivity</b>	Human, Mouse
<b>Clonality</b>	Monoclonal
<b>Other Names</b>	CD104; gp150; Integrin beta 4 subunit; ITG B4; ITGB 4; Itgb4;
<b>Isotype</b>	Rabbit IgG
<b>Host</b>	Rabbit
<b>Calculated MW</b>	202167

## Additional Information

<b>Dilution</b>	WB 1:500~1:2000 IHC 1:50~1:200
<b>Purification</b>	Affinity-chromatography
<b>Immunogen</b>	A synthesized peptide derived from human Integrin beta 4
<b>Description</b>	Integrin alpha-6/beta-4 is a receptor for laminin. It plays a critical structural role in the hemidesmosome of epithelial cells.
<b>Storage Condition and Buffer</b>	Rabbit IgG in phosphate buffered saline , pH 7.4, 150mM NaCl, 0.02% sodium azide and 50% glycerol. Store at +4°C short term. Store at -20°C long term. Avoid freeze / thaw cycle.

## Protein Information

<b>Name</b>	ITGB4
<b>Function</b>	Integrin alpha-6/beta-4 is a receptor for laminin. Plays a critical structural role in the hemidesmosome of epithelial cells. Is required for the regulation of keratinocyte polarity and motility. ITGA6:ITGB4 binds to NRG1 (via EGF domain) and this binding is essential for NRG1-ERBB signaling (PubMed: <a href="#">20682778</a> ). ITGA6:ITGB4 binds to IGF1 and this binding is essential for IGF1 signaling (PubMed: <a href="#">22351760</a> ). ITGA6:ITGB4 binds to IGF2 and this binding is essential for IGF2 signaling (PubMed: <a href="#">28873464</a> ).
<b>Cellular Location</b>	Cell membrane; Single-pass type I membrane protein. Cell membrane; Lipid-anchor. Cell junction, hemidesmosome Note=Colocalizes with DST at the leading edge of migrating keratinocytes
<b>Tissue Location</b>	Integrin alpha-6/beta-4 is predominantly expressed by epithelia. Isoform beta-4D is also expressed in colon and placenta Isoform beta-4E is also expressed in epidermis, lung, duodenum, heart, spleen and stomach



Western blot analysis of Integrin beta 4 expression in (1) SW480 cell lysate; (2) Mouse spleen lysate.

Image not found : 202311/AP91207-IHC.jpg

Immunohistochemical analysis of paraffin-embedded human breast cancer, using Integrin beta 4 Antibody.

Please note: All products are 'FOR RESEARCH USE ONLY. NOT FOR USE IN DIAGNOSTIC OR THERAPEUTIC PROCEDURES'.