

Catalase Antibody

Rabbit mAb

Catalog # AP91213

Product Information

Application	WB, IHC
Primary Accession	P04040
Reactivity	Rat, Human, Mouse
Clonality	Monoclonal
Other Names	Cas1; CAT; Catalase; Cs1;
Isotype	Rabbit IgG
Host	Rabbit
Calculated MW	59756

Additional Information

Dilution	WB 1:500~1:1000 IHC 1:50~1:200
Purification	Affinity-chromatography
Immunogen	A synthesized peptide derived from human Catalase
Description	Catalase catalyzes the conversion of hydrogen peroxide to water and oxygen. Research studies show that overexpression of this antioxidant enzyme increases the ability of pancreatic β -cells to scavenge reactive oxygen species (ROS), thereby protecting pancreatic β -cells from oxidative stress.
Storage Condition and Buffer	Rabbit IgG in phosphate buffered saline , pH 7.4, 150mM NaCl, 0.02% sodium azide and 50% glycerol. Store at +4°C short term. Store at -20°C long term. Avoid freeze / thaw cycle.

Protein Information

Name	CAT
Function	Catalyzes the degradation of hydrogen peroxide (H ₂ O ₂) generated by peroxisomal oxidases to water and oxygen, thereby protecting cells from the toxic effects of hydrogen peroxide (PubMed: 7882369). Promotes growth of cells including T-cells, B-cells, myeloid leukemia cells, melanoma cells, mastocytoma cells and normal and transformed fibroblast cells (PubMed: 7882369).
Cellular Location	Peroxisome matrix

Images

Western blot analysis of Catalase expression in HepG2 cell lysate.

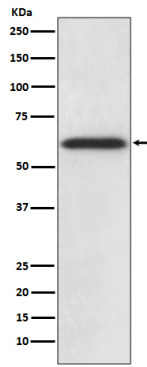


Image not found : 202311/AP91213-IHC.jpg

Immunohistochemical analysis of paraffin-embedded rat liver, using Catalase Antibody.

Please note: All products are 'FOR RESEARCH USE ONLY. NOT FOR USE IN DIAGNOSTIC OR THERAPEUTIC PROCEDURES'.