

# CD41 Antibody

Rabbit mAb

Catalog # AP91220

## Product Information

<b>Application</b>	WB, IHC
<b>Primary Accession</b>	<a href="#">P08514</a>
<b>Reactivity</b>	Human
<b>Clonality</b>	Monoclonal
<b>Other Names</b>	Integrin alpha-Iib; GPalpha Iib; GPIIb; Platelet membrane glycoprotein Iib; CD41; ITGA2B; GP2B; ITGAB;
<b>Isotype</b>	Rabbit IgG
<b>Host</b>	Rabbit
<b>Calculated MW</b>	113377

## Additional Information

<b>Dilution</b>	WB 1:500~1:1000 IHC 1:50~1:200
<b>Purification</b>	Affinity-chromatography
<b>Immunogen</b>	A synthesized peptide derived from human CD41
<b>Description</b>	Integrin alpha-Iib/beta-3 is a receptor for fibronectin, fibrinogen, plasminogen, prothrombin, thrombospondin and vitronectin. It recognizes the sequence R-G-D in a wide array of ligands. It recognizes the sequence H-H-L-G-G-A-K-Q-A-G-D-V in fibrinogen gamma chain.
<b>Storage Condition and Buffer</b>	Rabbit IgG in phosphate buffered saline , pH 7.4, 150mM NaCl, 0.02% sodium azide and 50% glycerol. Store at +4°C short term. Store at -20°C long term. Avoid freeze / thaw cycle.

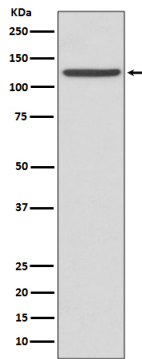
## Protein Information

<b>Name</b>	ITGA2B
<b>Synonyms</b>	GP2B, ITGAB
<b>Function</b>	Integrin alpha-Iib/beta-3 is a receptor for fibronectin, fibrinogen, plasminogen, prothrombin, thrombospondin and vitronectin. It recognizes the sequence R-G-D in a wide array of ligands. It recognizes the sequence H-H-L-G-G-A-K-Q-A-G-D-V in fibrinogen gamma chain (By similarity). Following activation integrin alpha-Iib/beta-3 brings about platelet/platelet interaction through binding of soluble fibrinogen (PubMed: <a href="#">9111081</a> ). This step leads to rapid platelet aggregation which physically plugs ruptured endothelial cell surface (By similarity).
<b>Cellular Location</b>	Membrane; Single-pass type I membrane protein.
<b>Tissue Location</b>	Isoform 1 and isoform 2 are expressed in platelets and megakaryocytes, but

not in reticulocytes. Not detected in Jurkat, nor in U937 cell lines (PubMed:2351656). Isoform 3 is expressed in prostate adenocarcinoma, as well as in several erythroleukemia, prostate adenocarcinoma and melanoma cell lines, including PC-3, DU-145, HEL, WM983A, WM983B and WM35. Not detected in platelets, nor in normal prostate (at protein level) (PubMed:9809974)

## Images

---



Western blot analysis of CD41 expression in human fetal liver lysate.

Please note: All products are 'FOR RESEARCH USE ONLY. NOT FOR USE IN DIAGNOSTIC OR THERAPEUTIC PROCEDURES'.