

NEFM Antibody

Rabbit mAb

Catalog # AP91221

Product Information

Application	WB, IHC, IF, ICC, IP, IHF
Primary Accession	P07197
Reactivity	Human
Clonality	Monoclonal
Other Names	150kDa medium; NEF3; NEFM; Neurofilament 3; NF160; NFM;
Isotype	Rabbit IgG
Host	Rabbit
Calculated MW	102472

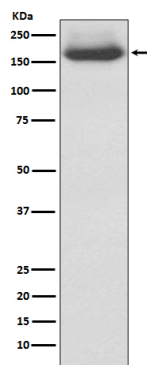
Additional Information

Dilution	WB 1:1000~1:5000 IHC 1:50~1:200 ICC/IF 1:50~1:200 IP 1:20
Purification	Affinity-chromatography
Immunogen	A synthesized peptide derived from human NEFM
Description	Integrins are heterodimers composed of noncovalently associated transmembrane α and β subunits. The 16 α and 8 β subunits heterodimerize to produce more than 20 different receptors. Antibodies to this protein are useful to identify neurons and their processes in tissue sections and in tissue culture.
Storage Condition and Buffer	Rabbit IgG in phosphate buffered saline , pH 7.4, 150mM NaCl, 0.02% sodium azide and 50% glycerol. Store at +4°C short term. Store at -20°C long term. Avoid freeze / thaw cycle.

Protein Information

Name	NEFM
Synonyms	NEF3, NFM
Function	Neurofilaments usually contain three intermediate filament proteins: NEFL, NEFM, and NEFH which are involved in the maintenance of neuronal caliber. May additionally cooperate with the neuronal intermediate filament proteins PRPH and INA to form neuronal filamentous networks (By similarity).
Cellular Location	Cytoplasm, cytoskeleton {ECO:0000250 UniProtKB:P08553}. Cell projection, axon {ECO:0000250 UniProtKB:P08553}

Images



Western blot analysis of NEFM expression in 293T cell lysate.

Please note: All products are 'FOR RESEARCH USE ONLY. NOT FOR USE IN DIAGNOSTIC OR THERAPEUTIC PROCEDURES'.