

GRP94 Antibody

Rabbit mAb

Catalog # AP91229

Product Information

Application	WB, IHC, IF, ICC, IHF
Primary Accession	P14625
Reactivity	Human, Mouse
Clonality	Monoclonal
Other Names	Endoplasmin; GRP-94; gp96 homolog; HSP90B1; GRP 94; TRA1;
Isotype	Rabbit IgG
Host	Rabbit
Calculated MW	92469

Additional Information

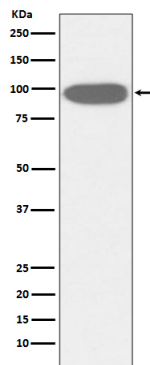
Dilution	WB 1:500~1:2000 IHC 1:50~1:200 ICC/IF 1:50~1:200
Purification	Affinity-chromatography
Immunogen	A synthesized peptide derived from human GRP94
Description	Molecular chaperone that functions in the processing and transport of secreted proteins. Functions in endoplasmic reticulum associated degradation (ERAD). Has ATPase activity.
Storage Condition and Buffer	Rabbit IgG in phosphate buffered saline , pH 7.4, 150mM NaCl, 0.02% sodium azide and 50% glycerol. Store at +4°C short term. Store at -20°C long term. Avoid freeze / thaw cycle.

Protein Information

Name	HSP90B1 {ECO:0000303 PubMed:39509507, ECO:0000312 HGNC:HGNC:12028}
Function	ATP-dependent chaperone involved in the processing of proteins in the endoplasmic reticulum, regulating their transport (PubMed: 23572575 , PubMed: 39509507). Together with MESD, acts as a modulator of the Wnt pathway by promoting the folding of LRP6, a coreceptor of the canonical Wnt pathway (PubMed: 23572575 , PubMed: 39509507). When associated with CNPY3, required for proper folding of Toll-like receptors (PubMed: 11584270). Promotes folding and trafficking of TLR4 to the cell surface (PubMed: 11584270). May participate in the unfolding of cytosolic leaderless cargos (lacking the secretion signal sequence) such as the interleukin 1/IL-1 to facilitate their translocation into the ERGIC (endoplasmic reticulum- Golgi intermediate compartment) and secretion; the translocation process is mediated by the cargo receptor TMED10 (PubMed: 32272059).
Cellular Location	Endoplasmic reticulum lumen. Sarcoplasmic reticulum lumen {ECO:0000250 UniProtKB:P41148}. Melanosome Note=Identified by mass

spectrometry in melanosome fractions from stage I to stage IV.

Images



Western blot analysis of GRP94 expression in HeLa cell lysate.

Please note: All products are 'FOR RESEARCH USE ONLY. NOT FOR USE IN DIAGNOSTIC OR THERAPEUTIC PROCEDURES'.