

Hepcidin Antibody

Rabbit mAb

Catalog # AP91230

Product Information

Application	WB
Primary Accession	P81172
Reactivity	Rat, Human
Clonality	Monoclonal
Other Names	Hepcidin; Liver-expressed antimicrobial peptide 1; LEAP-1; Putative liver tumor regressor; PLTR; Hepcidin-25; Hepc25; Hepcidin-20; Hepc20; HAMP; HEPC; LEAP1;
Isotype	Rabbit IgG
Host	Rabbit
Calculated MW	9408

Additional Information

Dilution	WB 1:500~1:2000
Purification	Affinity-chromatography
Immunogen	A synthesized peptide derived from human Hepcidin
Description	Hepcidin, also known as HAMP, HEPC, LEAP1 or HFE2B, is an 84 amino acid secreted protein that regulates iron-related signaling events. Acts by promoting endocytosis and degradation of ferroportin, leading to the retention of iron in iron-exporting cells and decreased flow of iron into plasma.
Storage Condition and Buffer	Rabbit IgG in phosphate buffered saline , pH 7.4, 150mM NaCl, 0.02% sodium azide and 50% glycerol. Store at +4°C short term. Store at -20°C long term. Avoid freeze / thaw cycle.

Protein Information

Name	HAMP (HGNC:15598)
Synonyms	HEPC, LEAP1
Function	Liver-produced hormone that constitutes the main circulating regulator of iron absorption and distribution across tissues. Acts by promoting endocytosis and degradation of ferroportin/SLC40A1, leading to the retention of iron in iron-exporting cells and decreased flow of iron into plasma (PubMed: 22682227 , PubMed: 29237594 , PubMed: 32814342). Controls the major flows of iron into plasma: absorption of dietary iron in the intestine, recycling of iron by macrophages, which phagocytose old erythrocytes and other cells, and mobilization of stored iron from hepatocytes (PubMed: 22306005).

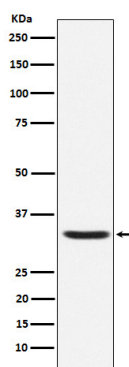
Cellular Location

Secreted.

Tissue Location

Highest expression in liver and to a lesser extent in heart and brain. Low levels in lung, tonsils, salivary gland, trachea, prostate gland, adrenal gland and thyroid gland. Secreted into the urine and blood (PubMed:11034317). Expressed by hepatocytes (PubMed:15124018).

Images



Western blot analysis of Hepcidin expression in Human Hepcidin Full-length Recombinant Protein (GFP Tagged).

Please note: All products are 'FOR RESEARCH USE ONLY. NOT FOR USE IN DIAGNOSTIC OR THERAPEUTIC PROCEDURES'.