

Axin2 Antibody

Rabbit mAb

Catalog # AP91233

Product Information

Application	WB, IHC, IF, ICC, IHF
Primary Accession	Q9Y2T1
Reactivity	Rat, Human, Mouse
Clonality	Monoclonal
Other Names	Axil; Axin like protein; Axin2; Axis inhibition protein 2; Conductin;
Isotype	Rabbit IgG
Host	Rabbit
Calculated MW	93568

Additional Information

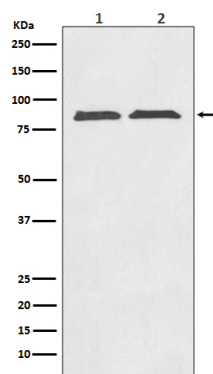
Dilution	WB 1:500~1:2000 IHC 1:50~1:200 ICC/IF 1:50~1:200
Purification	Affinity-chromatography
Immunogen	A synthesized peptide derived from human Axin2
Description	Axin1 (Axis inhibition protein 1) and Axin2 are multidomain scaffold proteins that negatively regulate Wnt signaling. Axin1 interacts with APC, GSK-3 β , Dvl, and β -catenin and promotes the GSK-3 β -mediated phosphorylation and subsequent degradation of β -catenin. Down-regulates beta-catenin.
Storage Condition and Buffer	Rabbit IgG in phosphate buffered saline , pH 7.4, 150mM NaCl, 0.02% sodium azide and 50% glycerol. Store at +4°C short term. Store at -20°C long term. Avoid freeze / thaw cycle.

Protein Information

Name	AXIN2
Function	Inhibitor of the Wnt signaling pathway. Down-regulates beta- catenin. Probably facilitate the phosphorylation of beta-catenin and APC by GSK3B.
Cellular Location	Cytoplasm.
Tissue Location	Expressed in brain and lymphoblast.

Images

Western blot analysis of Axin2 expression in (1) SW480 cell lysate; (2) PC-12 cell lysate.



Please note: All products are 'FOR RESEARCH USE ONLY. NOT FOR USE IN DIAGNOSTIC OR THERAPEUTIC PROCEDURES'.