

# TTR Antibody

Rabbit mAb

Catalog # AP91246

## Product Information

<b>Application</b>	WB, IHC, IF, FC, ICC, IP, IHF
<b>Primary Accession</b>	<a href="#">P02766</a>
<b>Reactivity</b>	Human
<b>Clonality</b>	Monoclonal
<b>Other Names</b>	Amyloid polyneuropathy; Amyloidosis I; ATTR; Carpal tunnel syndrome 1; CTS; CTS1; HsT2651; PALB; Prealbumin amyloidosis type I; Prealbumin;
<b>Isotype</b>	Rabbit IgG
<b>Host</b>	Rabbit
<b>Calculated MW</b>	15887

## Additional Information

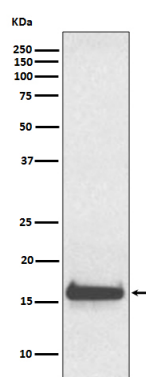
<b>Dilution</b>	WB 1:500~1:2000 IHC 1:50~1:200 ICC/IF 1:50~1:200 IP 1:50 FC 1:50
<b>Purification</b>	Affinity-chromatography
<b>Immunogen</b>	A synthesized peptide derived from human TTR
<b>Description</b>	Thyroid hormone-binding protein. Probably transports thyroxine from the bloodstream to the brain.
<b>Storage Condition and Buffer</b>	Rabbit IgG in phosphate buffered saline , pH 7.4, 150mM NaCl, 0.02% sodium azide and 50% glycerol. Store at +4°C short term. Store at -20°C long term. Avoid freeze / thaw cycle.

## Protein Information

<b>Name</b>	TTR
<b>Synonyms</b>	PALB
<b>Function</b>	Thyroid hormone-binding protein. Probably transports thyroxine from the bloodstream to the brain.
<b>Cellular Location</b>	Secreted. Cytoplasm.
<b>Tissue Location</b>	Detected in serum and cerebrospinal fluid (at protein level). Highly expressed in choroid plexus epithelial cells Detected in retina pigment epithelium and liver

## Images

Western blot analysis of TTR expression in human serum



lysate.

Please note: All products are 'FOR RESEARCH USE ONLY. NOT FOR USE IN DIAGNOSTIC OR THERAPEUTIC PROCEDURES'.