

ERp57 Antibody

Rabbit mAb

Catalog # AP91247

Product Information

Application	WB, IHC, IP
Primary Accession	P30101
Reactivity	Human
Clonality	Monoclonal
Other Names	ERp57; ERp60; ERp61; Glucose Regulated Protein 58 Kd; HsT17083; p58; PDIA3; Phospholipase C alpha; PI PLC;
Isotype	Rabbit IgG
Host	Rabbit
Calculated MW	56782

Additional Information

Dilution	WB 1:500~1:2000 IHC 1:50~1:200 IP 1:50
Purification	Affinity-chromatography
Immunogen	A synthesized peptide derived from human ERp57
Description	Detected in the flagellum and head region of spermatozoa (at protein level).
Storage Condition and Buffer	Rabbit IgG in phosphate buffered saline , pH 7.4, 150mM NaCl, 0.02% sodium azide and 50% glycerol. Store at +4°C short term. Store at -20°C long term. Avoid freeze / thaw cycle.

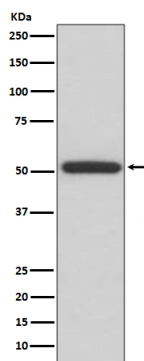
Protein Information

Name	PDIA3 (HGNC:4606)
Synonyms	ERP57, ERP60, GRP58
Function	Protein disulfide isomerase that catalyzes the formation, isomerization, and reduction or oxidation of disulfide bonds in client proteins and functions as a protein folding chaperone (PubMed: 11825568 , PubMed: 16193070 , PubMed: 27897272 , PubMed: 36104323 , PubMed: 7487104). Core component of the major histocompatibility complex class I (MHC I) peptide loading complex where it functions as an essential folding chaperone for TAPBP. Through TAPBP, assists the dynamic assembly of the MHC I complex with high affinity antigens in the endoplasmic reticulum. Therefore, plays a crucial role in the presentation of antigens to cytotoxic T cells in adaptive immunity (PubMed: 35948544 , PubMed: 36104323).
Cellular Location	Endoplasmic reticulum. Endoplasmic reticulum lumen {ECO:0000250 UniProtKB:P11598}. Melanosome Note=Identified by mass spectrometry in melanosome fractions from stage I to stage IV (PubMed:12643545).

Tissue Location

Detected in the flagellum and head region of spermatozoa (at protein level) (PubMed:20400973). Expressed in liver, stomach and colon (at protein level). Expressed in gastric parietal cells and chief cells (at protein level) (PubMed:24188822)

Images



Western blot analysis of ERp57 expression in HepG2 cell lysate.

Please note: All products are 'FOR RESEARCH USE ONLY. NOT FOR USE IN DIAGNOSTIC OR THERAPEUTIC PROCEDURES'.