

# EGF Antibody

Rabbit mAb

Catalog # AP91248

## Product Information

---

<b>Application</b>	WB, IP
<b>Primary Accession</b>	<a href="#">P01133</a>
<b>Reactivity</b>	Human
<b>Clonality</b>	Monoclonal
<b>Other Names</b>	Beta urogastrone; Egf; Epidermal growth factor; HOMG4; Pro epidermal growth factor; URG; Urogastrone;
<b>Isotype</b>	Rabbit IgG
<b>Host</b>	Rabbit
<b>Calculated MW</b>	133994

## Additional Information

---

<b>Dilution</b>	WB 1:500~1:2000 IP 1:50
<b>Purification</b>	Affinity-chromatography
<b>Immunogen</b>	A synthesized peptide derived from human EGF
<b>Description</b>	EGF stimulates the growth of various epidermal and epithelial tissues in vivo and in vitro and of some fibroblasts in cell culture. Magnesiotropic hormone that stimulates magnesium reabsorption in the renal distal convoluted tubule via engagement of EGFR and activation of the magnesium channel TRPM6.
<b>Storage Condition and Buffer</b>	Rabbit IgG in phosphate buffered saline , pH 7.4, 150mM NaCl, 0.02% sodium azide and 50% glycerol. Store at +4°C short term. Store at -20°C long term. Avoid freeze / thaw cycle.

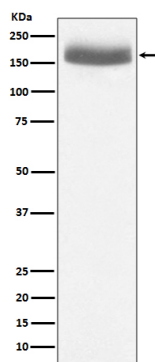
## Protein Information

---

<b>Name</b>	EGF
<b>Function</b>	EGF stimulates the growth of various epidermal and epithelial tissues in vivo and in vitro and of some fibroblasts in cell culture. Magnesiotropic hormone that stimulates magnesium reabsorption in the renal distal convoluted tubule via engagement of EGFR and activation of the magnesium channel TRPM6. Can induce neurite outgrowth in motoneurons of the pond snail <i>Lymnaea stagnalis</i> in vitro (PubMed: <a href="#">10964941</a> ).
<b>Cellular Location</b>	Membrane; Single-pass type I membrane protein.
<b>Tissue Location</b>	Expressed in kidney, salivary gland, cerebrum and prostate.

## Images

---



Western blot analysis of EGF expression in human urine sample lysate.

Please note: All products are 'FOR RESEARCH USE ONLY. NOT FOR USE IN DIAGNOSTIC OR THERAPEUTIC PROCEDURES'.