

G-CSF Antibody

Rabbit mAb

Catalog # AP91255

Product Information

Application	WB, IF, ICC, IP
Primary Accession	P09919
Reactivity	Rat, Human, Mouse
Clonality	Monoclonal
Other Names	CSF beta; CSF3; CSF3OS; Csfg; Filgrastim; G-CSF; GCSA; GCSF; MGI 2; Pluripoietin;
Isotype	Rabbit IgG
Host	Rabbit
Calculated MW	22293

Additional Information

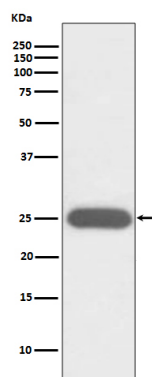
Dilution	WB 1:500~1:2000 ICC/IF 1:50~1:200 IP 1:20
Purification	Affinity-chromatography
Immunogen	A synthesized peptide derived from human G-CSF
Description	Granulocyte/macrophage colony-stimulating factors are cytokines that act in hematopoiesis by controlling the production, differentiation, and function of 2 related white cell populations of the blood, the granulocytes and the monocytes-macrophages. This CSF induces granulocytes.
Storage Condition and Buffer	Rabbit IgG in phosphate buffered saline , pH 7.4, 150mM NaCl, 0.02% sodium azide and 50% glycerol. Store at +4°C short term. Store at -20°C long term. Avoid freeze / thaw cycle.

Protein Information

Name	CSF3
Synonyms	C17orf33, GCSF
Function	Granulocyte/macrophage colony-stimulating factors are cytokines that act in hematopoiesis by controlling the production, differentiation, and function of 2 related white cell populations of the blood, the granulocytes and the monocytes-macrophages. This CSF induces granulocytes.
Cellular Location	Secreted.

Images

Western blot analysis of G-CSF expression in K562 cell



lysate.

Please note: All products are 'FOR RESEARCH USE ONLY. NOT FOR USE IN DIAGNOSTIC OR THERAPEUTIC PROCEDURES'.