

MIF Antibody

Rabbit mAb

Catalog # AP91259

Product Information

Application	WB, FC, IP
Primary Accession	P14174
Reactivity	Rat, Human, Mouse
Clonality	Monoclonal
Other Names	GIF; GLIF; Glycosylation inhibiting factor; L-dopachrome isomerase; MIF protein; MMIF;
Isotype	Rabbit IgG
Host	Rabbit
Calculated MW	12476

Additional Information

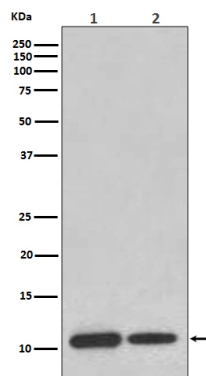
Dilution	WB 1:500~1:2000 IP 1:50 FC 1:50
Purification	Affinity-chromatography
Immunogen	A synthesized peptide derived from human MIF
Description	MIF promotes the systemic inflammatory response by counter-regulating glucocorticoid-mediated inhibition of immune-cell activation and proinflammatory cytokine production. MIF may mediate tissue destruction through the induction of proteinases.
Storage Condition and Buffer	Rabbit IgG in phosphate buffered saline , pH 7.4, 150mM NaCl, 0.02% sodium azide and 50% glycerol. Store at +4°C short term. Store at -20°C long term. Avoid freeze / thaw cycle.

Protein Information

Name	MIF {ECO:0000303 PubMed:2552447, ECO:0000312 HGNC:HGNC:7097}
Function	Pro-inflammatory cytokine involved in the innate immune response to bacterial pathogens (PubMed: 15908412 , PubMed: 17443469 , PubMed: 23776208). The expression of MIF at sites of inflammation suggests a role as mediator in regulating the function of macrophages in host defense (PubMed: 15908412 , PubMed: 17443469 , PubMed: 23776208). Counteracts the anti-inflammatory activity of glucocorticoids (PubMed: 15908412 , PubMed: 17443469 , PubMed: 23776208). Has phenylpyruvate tautomerase and dopachrome tautomerase activity (in vitro), but the physiological substrate is not known (PubMed: 11439086 , PubMed: 17526494). It is not clear whether the tautomerase activity has any physiological relevance, and whether it is important for cytokine activity (PubMed: 11439086 , PubMed: 17526494).
Cellular Location	Secreted. Cytoplasm. Note=Does not have a cleavable signal sequence and is secreted via a specialized, non-classical pathway Secreted by macrophages

upon stimulation by bacterial lipopolysaccharide (LPS), or by M.tuberculosis antigens

Images



Western blot analysis of MIF expression in (1) THP-1 cell lysate; (2) Mouse brain lysate.

Please note: All products are 'FOR RESEARCH USE ONLY. NOT FOR USE IN DIAGNOSTIC OR THERAPEUTIC PROCEDURES'.