

RPE65 Antibody

Rabbit mAb

Catalog # AP91260

Product Information

Application	WB, IP
Primary Accession	Q16518
Reactivity	Rat, Human, Mouse
Clonality	Monoclonal
Other Names	LCA2; mRPE65; p63; rd12; Retinal pigment epithelium specific 61 kDa protein; RP20; RPE65; sRPE65;
Isotype	Rabbit IgG
Host	Rabbit
Calculated MW	61 KDa

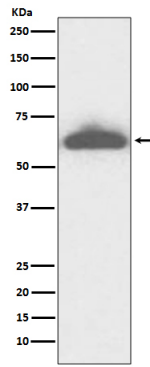
Additional Information

Dilution	WB 1:500~1:2000 IP 1:50
Purification	Affinity-chromatography
Immunogen	A synthesized peptide derived from human RPE65
Description	Plays important roles in the production of 11-cis retinal and in visual pigment regeneration. The soluble form binds vitamin A (all-trans-retinol), making it available for LRAT processing to all-trans-retinyl ester. The membrane form, palmitoylated by LRAT, binds all-trans-retinyl esters, making them available for IMH (isomerohydrolase) processing to all-cis-retinol.
Storage Condition and Buffer	Rabbit IgG in phosphate buffered saline , pH 7.4, 150mM NaCl, 0.02% sodium azide and 50% glycerol. Store at +4°C short term. Store at -20°C long term. Avoid freeze / thaw cycle.

Protein Information

Images

Western blot analysis of RPE65 expression in mouse eyeball lysate.



Please note: All products are 'FOR RESEARCH USE ONLY. NOT FOR USE IN DIAGNOSTIC OR THERAPEUTIC PROCEDURES'.