

CHAT Antibody

Rabbit mAb

Catalog # AP91262

Product Information

Application	WB, IHC, IF, FC, ICC, IP, IHF
Primary Accession	P28329
Reactivity	Rat, Human, Mouse
Clonality	Monoclonal
Other Names	Acetyl CoA choline O acetyltransferase; ChAT; CHOACTase; Choline acetylase; choline acetyltransferase; Choline O acetyltransferase; CMS1A2;
Isotype	Rabbit IgG
Host	Rabbit
Calculated MW	82536

Additional Information

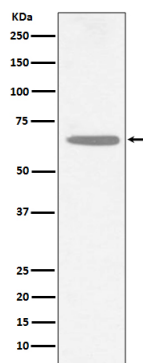
Dilution	WB 1:500~1:2000 IHC 1:50~1:200 ICC/IF 1:50~1:200 IP 1:50 FC 1:50
Purification	Affinity-chromatography
Immunogen	A synthesized peptide derived from human CHAT
Description	Catalyzes the reversible synthesis of acetylcholine (ACh) from acetyl CoA and choline at cholinergic synapses.
Storage Condition and Buffer	Rabbit IgG in phosphate buffered saline , pH 7.4, 150mM NaCl, 0.02% sodium azide and 50% glycerol. Store at +4°C short term. Store at -20°C long term. Avoid freeze / thaw cycle.

Protein Information

Name	CHAT
Function	Catalyzes the reversible synthesis of acetylcholine (ACh) from acetyl CoA and choline at cholinergic synapses.

Images

Western blot analysis of CHAT expression in SH-SY5Y cell lysate.



Please note: All products are 'FOR RESEARCH USE ONLY. NOT FOR USE IN DIAGNOSTIC OR THERAPEUTIC PROCEDURES'.