

# Apg10 (Atg10) Antibody

Rabbit mAb

Catalog # AP91266

## Product Information

---

<b>Application</b>	WB, IP
<b>Primary Accession</b>	<a href="#">Q9H0Y0</a>
<b>Reactivity</b>	Human
<b>Clonality</b>	Monoclonal
<b>Other Names</b>	APG10L;ATG10 autophagy related 10 homolog (S. cerevisiae); ATG10 autophagy related 10 homolog; Autophagy related protein 10;
<b>Isotype</b>	Rabbit IgG
<b>Host</b>	Rabbit
<b>Calculated MW</b>	25279

## Additional Information

---

<b>Dilution</b>	WB 1:500~1:2000 IP 1:50
<b>Purification</b>	Affinity-chromatography
<b>Immunogen</b>	A synthesized peptide derived from human Apg10 (Atg10)
<b>Description</b>	E2-like enzyme involved in autophagy. Acts as an E2-like enzyme that catalyzes the conjugation of ATG12 to ATG5. ATG12 conjugation to ATG5 is required for autophagy. Likely serves as an ATG5-recognition molecule. Not involved in ATG12 conjugation to ATG3 (By similarity). Plays a role in adenovirus-mediated cell lysis.
<b>Storage Condition and Buffer</b>	Rabbit IgG in phosphate buffered saline , pH 7.4, 150mM NaCl, 0.02% sodium azide and 50% glycerol. Store at +4°C short term. Store at -20°C long term. Avoid freeze / thaw cycle.

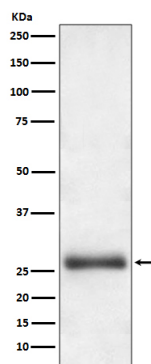
## Protein Information

---

<b>Name</b>	ATG10
<b>Synonyms</b>	APG10L
<b>Function</b>	E2-like enzyme involved in autophagy. Acts as an E2-like enzyme that catalyzes the conjugation of ATG12 to ATG5. ATG12 conjugation to ATG5 is required for autophagy. Likely serves as an ATG5-recognition molecule. Not involved in ATG12 conjugation to ATG3 (By similarity). Plays a role in adenovirus-mediated cell lysis.
<b>Cellular Location</b>	Cytoplasm.

## Images

---



Western blot analysis of Apg10 (Atg10) expression in HeLa cell lysate.

Please note: All products are 'FOR RESEARCH USE ONLY. NOT FOR USE IN DIAGNOSTIC OR THERAPEUTIC PROCEDURES'.