

SOS1 Antibody

Rabbit mAb

Catalog # AP91267

Product Information

Application	WB, IHC, IF, ICC, IHF
Primary Accession	Q07889
Reactivity	Rat, Human, Mouse
Clonality	Monoclonal
Other Names	alternate SOS1; GF1; GGF1; GINGF; gingival fibromatosis; HGF; NS4; Sos1;
Isotype	Rabbit IgG
Host	Rabbit
Calculated MW	152464

Additional Information

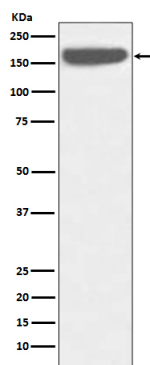
Dilution	WB 1:500~1:2000 IHC 1:50~1:200 ICC/IF 1:50~1:200
Purification	Affinity-chromatography
Immunogen	A synthesized peptide derived from human SOS1
Description	Promotes the exchange of Ras-bound GDP by GTP.
Storage Condition and Buffer	Rabbit IgG in phosphate buffered saline , pH 7.4, 150mM NaCl, 0.02% sodium azide and 50% glycerol. Store at +4°C short term. Store at -20°C long term. Avoid freeze / thaw cycle.

Protein Information

Name	SOS1
Function	Promotes the exchange of Ras-bound GDP by GTP (PubMed: 8493579). Probably by promoting Ras activation, regulates phosphorylation of MAP kinase MAPK3/ERK1 in response to EGF (PubMed: 17339331). Catalytic component of a trimeric complex that participates in transduction of signals from Ras to Rac by promoting the Rac-specific guanine nucleotide exchange factor (GEF) activity (By similarity).
Tissue Location	Expressed in gingival tissues.

Images

Western blot analysis of SOS1 expression in HeLa cell lysate.



Please note: All products are 'FOR RESEARCH USE ONLY. NOT FOR USE IN DIAGNOSTIC OR THERAPEUTIC PROCEDURES'.