

# GCLC Antibody

Rabbit mAb

Catalog # AP91269

## Product Information

---

|                          |   |
|--------------------------|---|
| <b>Application</b>       | WB  |
| <b>Primary Accession</b> | <a href="#">P48506</a>  |
| <b>Reactivity</b>        | Rat, Human  |
| <b>Clonality</b>         | Monoclonal  |
| <b>Other Names</b>       | GCS heavy chain; Gamma-ECS Gamma-glutamylcysteine synthetase; GLCL; GLCLC; GCLC |
| <b>Isotype</b>           | Rabbit IgG  |
| <b>Host</b>              | Rabbit  |
| <b>Calculated MW</b>     | 72766   |

## Additional Information

---

|                                     |   |
|-------------------------------------|---|
| <b>Dilution</b>                     | WB 1:500~1:2000   |
| <b>Purification</b>                 | Affinity-chromatography   |
| <b>Immunogen</b>                    | A synthesized peptide derived from human GCLC   |
| <b>Description</b>                  | Sulfur metabolism; glutathione biosynthesis; glutathione from L-cysteine and L-glutamate: step 1/2.   |
| <b>Storage Condition and Buffer</b> | Rabbit IgG in phosphate buffered saline , pH 7.4, 150mM NaCl, 0.02% sodium azide and 50% glycerol. Store at +4°C short term. Store at -20°C long term. Avoid freeze / thaw cycle. |

## Protein Information

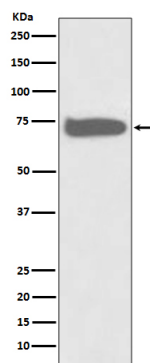
---

|                 |   |
|-----------------|---|
| <b>Name</b>     | GCLC ( <a href="#">HGNC:4311</a> )  |
| <b>Synonyms</b> | GLCL, GLCLC   |
| <b>Function</b> | Catalyzes the ATP-dependent ligation of L-glutamate and L- cysteine and participates in the first and rate-limiting step in glutathione biosynthesis. |

## Images

---

Western blot analysis of GCLC expression in HepG2 cell lysate.



Please note: All products are 'FOR RESEARCH USE ONLY. NOT FOR USE IN DIAGNOSTIC OR THERAPEUTIC PROCEDURES'.