

IKK gamma Antibody

Rabbit mAb

Catalog # AP91273

Product Information

Application	WB, IHC, IF, FC, ICC, IP, IHF
Primary Accession	Q9Y6K9
Reactivity	Rat, Human, Mouse
Clonality	Monoclonal
Other Names	AMCBX1; FIP3; Fip3p; Ikbkg; IKK-gamma; IKKAP1; IKKG; IMD33; IP1; IP2; IPD2; NEMO; NF kappa B essential modifier;
Isotype	Rabbit IgG
Host	Rabbit
Calculated MW	48198

Additional Information

Dilution	WB 1:500~1:2000 IHC 1:50~1:200 ICC/IF 1:50~1:200 IP 1:50 FC 1:50
Purification	Affinity-chromatography
Immunogen	A synthesized peptide derived from human IKK gamma
Description	The NF- κ B/Rel transcription factors are present in the cytosol in an inactive state, complexed with the inhibitory I κ B proteins. Most agents that activate NF- κ B do so through a common pathway based on phosphorylation-induced, proteasome-mediated degradation of I κ B.
Storage Condition and Buffer	Rabbit IgG in phosphate buffered saline , pH 7.4, 150mM NaCl, 0.02% sodium azide and 50% glycerol. Store at +4°C short term. Store at -20°C long term. Avoid freeze / thaw cycle.

Protein Information

Name	IKBKG (HGNC:5961)
Synonyms	FIP3, NEMO
Function	Regulatory subunit of the IKK core complex which phosphorylates inhibitors of NF-kappa-B thus leading to the dissociation of the inhibitor/NF-kappa-B complex and ultimately the degradation of the inhibitor (PubMed: 14695475 , PubMed: 20724660 , PubMed: 21518757 , PubMed: 9751060). Its binding to scaffolding polyubiquitin plays a key role in IKK activation by multiple signaling receptor pathways (PubMed: 16547522 , PubMed: 18287044 , PubMed: 19033441 , PubMed: 19185524 , PubMed: 21606507 , PubMed: 27777308 , PubMed: 33567255). Can recognize and bind both 'Lys-63'-linked and linear polyubiquitin upon cell stimulation, with a much higher affinity for linear polyubiquitin (PubMed: 16547522 , PubMed: 18287044 , PubMed: 19033441 , PubMed: 19185524 , PubMed: 21606507 , PubMed: 27777308). Could be implicated in NF-kappa-B-mediated protection

from cytokine toxicity. Essential for viral activation of IRF3 (PubMed:[19854139](#)). Involved in TLR3- and IFIH1-mediated antiviral innate response; this function requires 'Lys- 27'-linked polyubiquitination (PubMed:[20724660](#)).

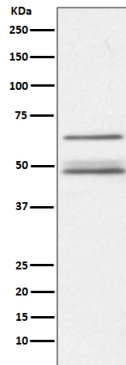
Cellular Location

Cytoplasm. Nucleus Note=Sumoylated NEMO accumulates in the nucleus in response to genotoxic stress.

Tissue Location

Heart, brain, placenta, lung, liver, skeletal muscle, kidney and pancreas

Images



Western blot analysis of IKK gamma expression in Jurkat cell lysate.

Image not found : 202311/AP91273-IHC.jpg

Immunohistochemical analysis of paraffin-embedded mouse colon, using IKK gamma Antibody.

Please note: All products are 'FOR RESEARCH USE ONLY. NOT FOR USE IN DIAGNOSTIC OR THERAPEUTIC PROCEDURES'.